

TOWN AND COUNTRY PLANNING (TREES) REGULATIONS 2012**TOWN AND COUNTRY PLANNING ACT 1990****THE WARRINGTON BOROUGH COUNCIL (DOEFORD CLOSE, CULCHETH) TREE
PRESERVATION VARIATION ORDER 2013
(TPO 499)**

The Warrington Borough Council, in exercise of the powers conferred on them by sections 198 of the Town and Country Planning Act 1990 hereby make the following Order—

Citation

1. This Order may be cited as The Warrington Borough Council (Doeford Close, Culcheth) Tree Preservation Variation Order 2013.

Interpretation

2. (1) In this Order “the authority” means the Warrington Borough Council.

(2) In this Order any reference to a numbered section is a reference to the section so numbered in the Town and Country Planning Act 1990 and any reference to a numbered regulation is a reference to the regulation so numbered in the Town and Country Planning (Tree preservation)(England) Regulations 2012.

Effect

3. (1) Subject to article 4, this Order takes effect provisionally on the date on which it is made

(2) Without prejudice to subsection (7) of section 198 (power to make tree preservation orders) or subsection (1) of section 200 (tree preservation orders: Forestry Commissioners) and, subject to the exceptions in regulation 14, no person shall—

- (a) cut down, top, lop, uproot, wilfully damage or wilfully destroy; or
- (b) cause or permit the cutting down, topping, lopping, uprooting, wilful damage or wilful destruction of,

any tree specified in the Schedule to this Order except with the written consent of the authority in accordance with regulations 16 and 17, or of the Secretary of State in accordance with regulation 23, and, where such consent is given subject to conditions, in accordance with those conditions.

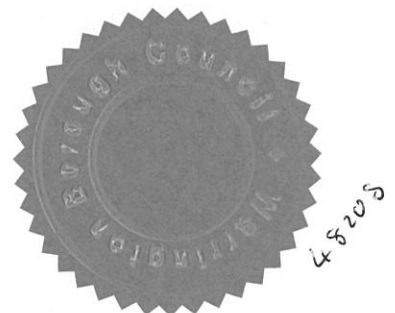
Application to trees to be planted pursuant to a condition

4. In relation to any tree identified in the first column of the Schedule by the letter “C”, being a tree to be planted pursuant to a condition imposed under paragraph (a) of section 197 (planning permission to include appropriate provision for preservation and planting of trees), this Order takes effect as from the time when the tree is planted.

Dated this 29th day of January 2013.

THE COMMON SEAL of the **WARRINGTON
BOROUGH COUNCIL** was hereunto
affixed in the presence of –

C. Garside
Authorised Signatory



SCHEDULE 1

SPECIFICATION OF TREES

Trees specified individually (encircled in black on the map)

Reference on map	Description	Situation
T37	Ash	Remove from the Order, condition unsatisfactory.

Trees specified by reference to an area (within a dotted black line on the map)

Reference on map	Description	Situation
		NONE

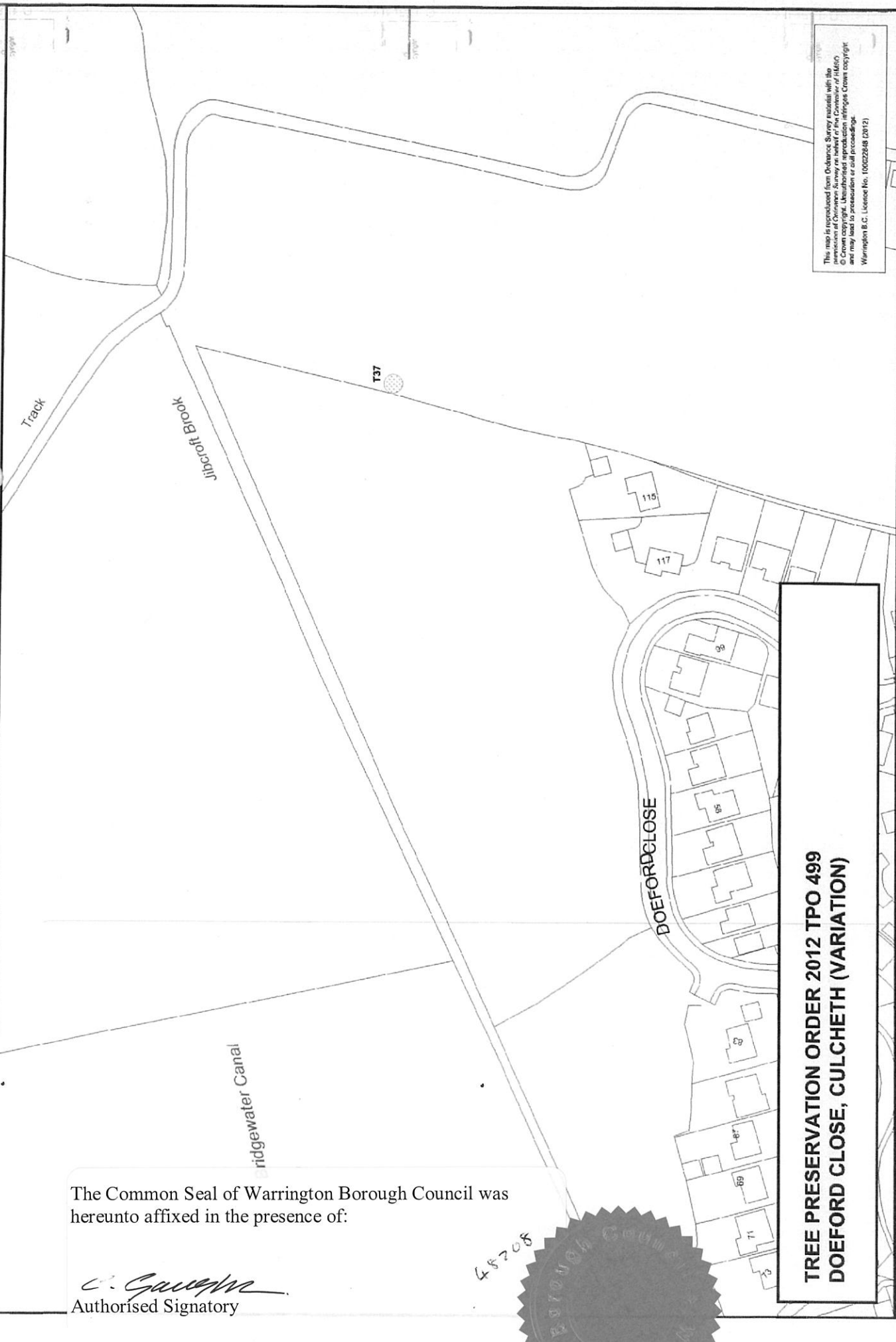
Groups of trees (within a broken red line on the map)

Reference on map	Description	Situation
		NONE

Woodlands (within a continuous red line on the map)

Reference on map	Description	Situation
		NONE

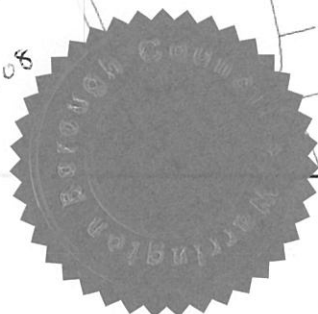
This map is reproduced from Ordnance Survey material with the permission of Ordnance Survey on behalf of the Controller of HMSO. It is reproduced by permission of the Controller of HMSO and may lead to prosecution without copyright infringement. Warrington B.C. Licence No. 10022848 (2012).



The Common Seal of Warrington Borough Council was hereunto affixed in the presence of:

C. Gawron
Authorised Signatory

48708



**TREE PRESERVATION ORDER 2012 TPO 499
DOEFORD CLOSE, CULCHETH (VARIATION)**

5.03133

[Handwritten signature]

Authorised by the Council to sign in that behalf.

TOWN AND COUNTRY PLANNING (TREES) REGULATIONS 2012

TOWN AND COUNTRY PLANNING ACT 1990

**THE WARRINGTON BOROUGH COUNCIL (DOEFORD CLOSE, CULCHETH) TREE PRESERVATION ORDER (2012)
(TPO 496)**

The Warrington Borough Council, in exercise of the powers conferred on them by sections 198 of the Town and Country Planning Act 1990 hereby make the following Order—

Citation

1. This Order may be cited as The Warrington Borough Council (Doeford Close, Culcheth) Tree Preservation Order (2012).

Interpretation

2. (1) In this Order "the authority" means the Warrington Borough Council.
(2) In this Order any reference to a numbered section is a reference to the section so numbered in the Town and Country Planning Act 1990 and any reference to a numbered regulation is a reference to the regulation so numbered in the Town and Country Planning (Tree preservation)(England) Regulations 2012.

Effect

3. (1) Subject to article 4, this Order takes effect provisionally on the date on which it is made
(2) Without prejudice to subsection (7) of section 198 (power to make tree preservation orders) or subsection (1) of section 200 (tree preservation orders: Forestry Commissioners) and, subject to the exceptions in regulation 14, no person shall—

- (a) cut down, top, lop, uproot, wilfully damage or wilfully destroy; or
- (b) cause or permit the cutting down, topping, lopping, uprooting, wilful damage or wilful destruction of,

any tree specified in the Schedule to this Order except with the written consent of the authority in accordance with regulations 16 and 17, or of the Secretary of State in accordance with regulation 23, and, where such consent is given subject to conditions, in accordance with those conditions.

Application to trees to be planted pursuant to a condition

4. In relation to any tree identified in the first column of the Schedule by the letter "C", being a tree to be planted pursuant to a condition imposed under paragraph (a) of section 197 (planning permission to include appropriate provision for preservation and planting of trees), this Order takes effect as from the time when the tree is planted.

Dated this 17th day of August 2012.

THE COMMON SEAL of the **WARRINGTON BOROUGH COUNCIL** was hereunto affixed in the presence of –

[Handwritten signature]
Authorised Signatory



This order was varied by Warrington Borough Council on the 29th day of January 2013 by a variation order under reference number TPO 499 a copy of which is attached.

Authorised by the Council to sign in that behalf

SCHEDULE 1

SPECIFICATION OF TREES

Trees specified individually
(encircled in black on the map)

Reference on map	Description	Situation
T1	Beech	On the northern boundary within the open space area
T2	Lime	On the northern boundary within the open space area
T3	Swedish Whitebeam	On the northern boundary within the open space area
T4	Cherry	On the northern boundary within the open space area
T5	Swedish Whitebeam	On the northern boundary within the open space area
T6	Swedish Whitebeam	On the northern boundary within the open space area
T7	Swedish Whitebeam	On the northern boundary within the open space area
T8	Lime	On the northern boundary within the open space area
T9	Swedish Whitebeam	On the northern boundary within the open space area
T10	Beech	On the northern boundary within the open space area
T11	Swedish Whitebeam	On the northern boundary within the open space area
T12	Swedish Whitebeam	On the northern boundary within the open space area
T13	Lime	On the northern boundary within the open space area
T14	Beech	On the northern boundary within the open space area
T15	Swedish Whitebeam	On the northern boundary within the open space area
T16	Beech	On the northern boundary within the open space area
T17	Swedish Whitebeam	On the northern boundary within the open space area
T18	Lime	On the northern boundary within the open space area
T19	Swedish Whitebeam	On the northern boundary within the open space area
T20	Bird Cherry	On the northern boundary within the open space area
T21	Swedish Whitebeam	On the northern boundary within the open space area
T22	Lime	In the north eastern corner of the open space area
T23	Whitebeam	In the north eastern corner of the open space area
T24	Swedish Whitebeam	In the north eastern corner of the open space area
T25	Beech	In the north eastern corner of the open space area
T26	Swedish Whitebeam	In the north eastern corner of the open space area
T27	Lime	On the eastern side of the site within the open space
T28	Lime	On the eastern side of the site within the open space
T29	Lime	On the eastern side of the site within the open space
T30	Lime	In the open space on the eastern part of the site
T31	Lime	In the open space on the eastern part of the boundary
T32	Lime	In the open space on the eastern part of the boundary
T33	Lime	In the open space on the eastern part of the boundary
T34	Lime	In the open space on the eastern part of the boundary, adjacent to 115 Doeford Close
T35	Beech	On the eastern boundary of the open space and in the adjacent agricultural hedge
T36	Ash	On the eastern boundary of the open space and in the adjacent agricultural hedge
T37	Ash	On the eastern boundary of the open space and in the adjacent

T38	Oak	agricultural hedge On the eastern boundary of the open space and in the adjacent agricultural hedge
T39	Beech	On the eastern boundary of the open space and in the adjacent agricultural hedge
T40	Ash	On the eastern boundary of the open space and in the adjacent agricultural hedge
T41	Oak	On the eastern boundary of the open space and in the adjacent agricultural hedge
T42	Ash	On the eastern boundary of the open space and in the adjacent agricultural hedge

Trees specified by reference to an area
(within a dotted black line on the map)

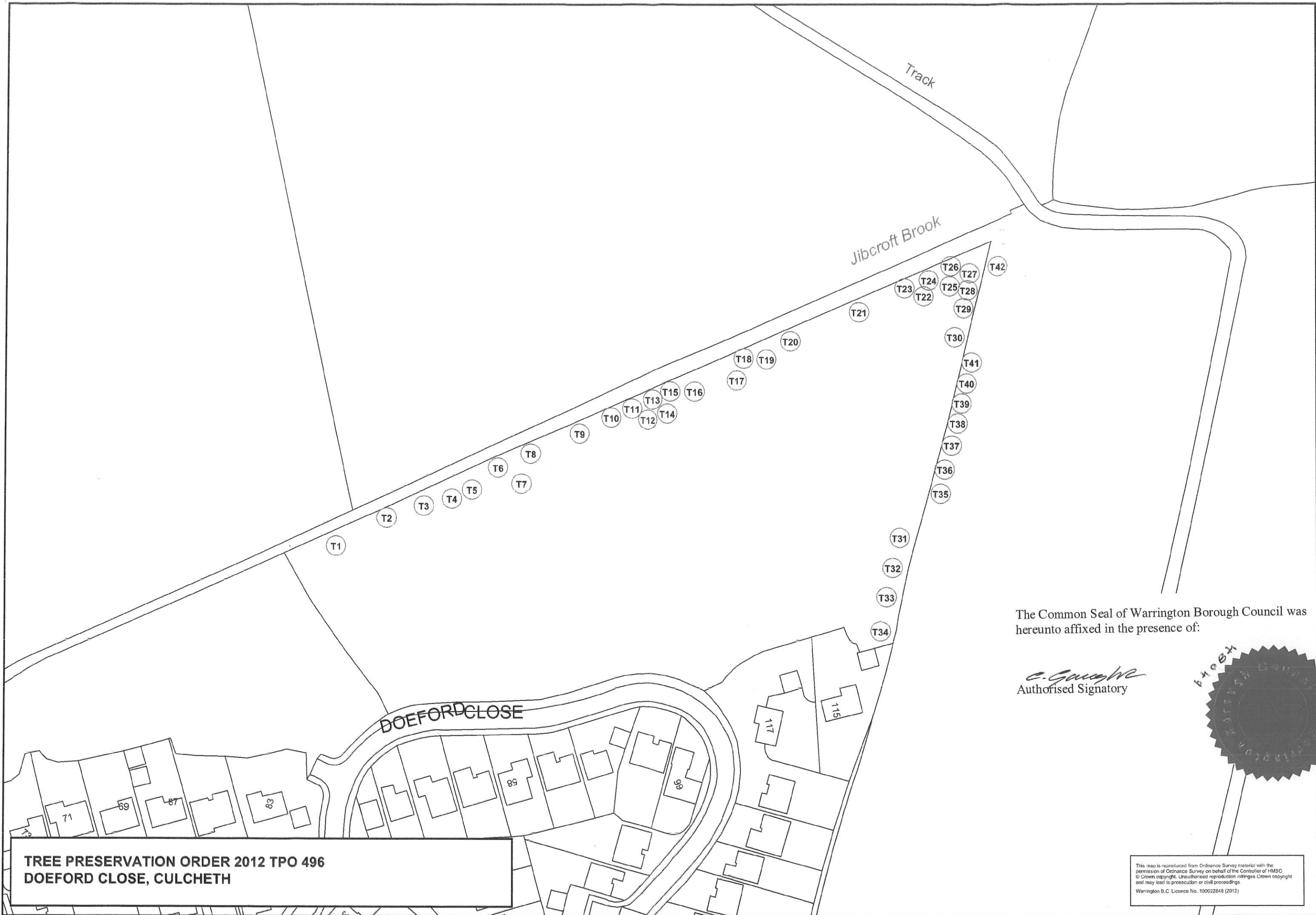
Reference on map	Description	Situation
		NONE

Groups of trees
(within a broken red line on the map)

Reference on map	Description	Situation
		NONE

Woodlands
(within a continuous red line on the map)

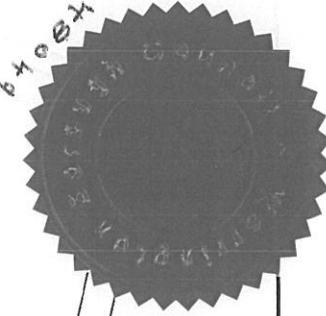
Reference on map	Description	Situation
		NONE



**TREE PRESERVATION ORDER 2012 TPO 496
DOEFORD CLOSE, CULCHETH**

The Common Seal of Warrington Borough Council was hereunto affixed in the presence of:

E. G. G. G.
Authorised Signatory



This map is reproduced from Ordnance Survey material with the permission of Ordnance Survey on behalf of the Controller of HMSO. © Crown copyright. Unauthorised reproduction infringes Crown copyright and may lead to prosecution or civil proceedings. Warrington B.C. Licence No. 100022848 (2012)

MODIFIED SCHEDULE 1

SPECIFICATION OF TREES

Trees specified individually
(encircled in black on the map)

Reference on map	Description	Situation
T1	Beech	On the northern boundary within the open space area
T2	Lime	On the northern boundary within the open space area
T3	Swedish Whitebeam	On the northern boundary within the open space area
T4	Cherry	On the northern boundary within the open space area
T5	Swedish Whitebeam	On the northern boundary within the open space area
T6	Swedish Whitebeam	On the northern boundary within the open space area
T7	Swedish Whitebeam	On the northern boundary within the open space area
T8	Lime	On the northern boundary within the open space area
T9	Swedish Whitebeam	On the northern boundary within the open space area
T10	Beech	On the northern boundary within the open space area
T11	Swedish Whitebeam	On the northern boundary within the open space area
T12	Swedish Whitebeam	On the northern boundary within the open space area
T13	Lime	On the northern boundary within the open space area
T14	Beech	On the northern boundary within the open space area
T15	Swedish Whitebeam	On the northern boundary within the open space area
T16	Beech	On the northern boundary within the open space area
T17	Swedish Whitebeam	On the northern boundary within the open space area
T18	Lime	On the northern boundary within the open space area
T19	Swedish Whitebeam	On the northern boundary within the open space area
T20	Bird Cherry	On the northern boundary within the open space area
T21	Swedish Whitebeam	On the northern boundary within the open space area
T22	Lime	In the north eastern corner of the open space area

T23	Whitebeam	In the north eastern corner of the open space area
T24	Swedish Whitebeam	In the north eastern corner of the open space area
T25	Beech	In the north eastern corner of the open space area
T26	Swedish Whitebeam	In the north eastern corner of the open space area
T27	Lime	On the eastern side of the site within the open space
T28	Lime	On the eastern side of the site within the open space
T29	Lime	On the eastern side of the site within the open space
T30	Lime	In the open space on the eastern part of the site
T31	Lime	In the open space on the eastern part of the boundary
T32	Lime	In the open space on the eastern part of the boundary
T33	Lime	In the open space on the eastern part of the boundary
T35	Beech	On the eastern boundary of the open space and in the adjacent agricultural hedge
T37	Ash	On the eastern boundary of the open space and in the adjacent agricultural hedge
T38	Oak	On the eastern boundary of the open space and in the adjacent agricultural hedge
T39	Beech	On the eastern boundary of the open space and in the adjacent agricultural hedge
T41	Oak	On the eastern boundary of the open space and in the adjacent agricultural hedge

Trees specified by reference to an area
(within a dotted black line on the map)

Reference on map	Description	Situation
------------------	-------------	-----------

NONE

Groups of trees
(within a broken red line on the map)

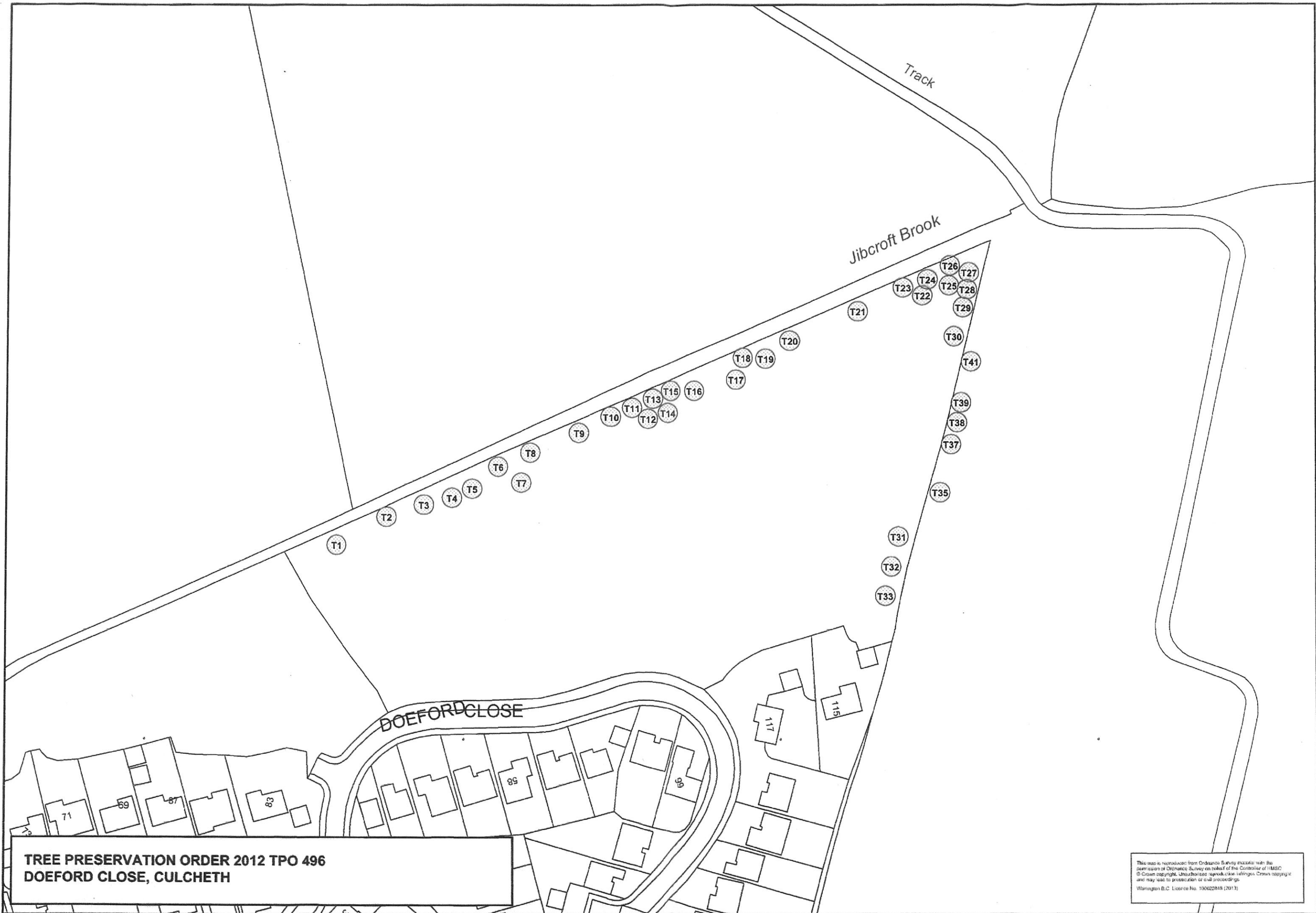
Reference on map	Description	Situation
------------------	-------------	-----------

NONE

Woodlands
(within a continuous red line on the map)

Reference on map	Description	Situation
------------------	-------------	-----------

NONE



**TREE PRESERVATION ORDER 2012 TPO 496
DOEFORD CLOSE, CULCHETH**

This map is reproduced from Ordnance Survey material with the permission of Ordnance Survey on behalf of the Controller of HMSO. © Crown copyright. Unauthorised reproduction infringes Crown copyright and may lead to prosecution or civil proceedings. Warrington B.C. Licence No. 100022848 (2013)