

Infrastructure Delivery Plan

2019



Contents

1. Introduction and Purpose	2
2. Draft Local Plan Context.....	3
Overall Strategy.....	3
Strategic Locations	3
Appendix 1 – Infrastructure Delivery Schedule	6

1. Introduction and Purpose

- 1.1 This Infrastructure Delivery Plan (IDP) is one of a series of evidence documents that support and underpin Warrington's Proposed Submission Version Local Plan.
- 1.2 The IDP aims to aid all parties in identifying and prioritising infrastructure provision as part of an integrated approach to planning and infrastructure development. In simple terms its purpose is to ensure that infrastructure delivery keeps pace with growth. The Local Plan aims to set out Warrington's infrastructure requirements within the Borough up to 2037 and the IDP remains an essential mechanism for helping to identify funding priorities and gaps. This will ensure that services can match demand and growth is sustainable for local communities. The IDP will give a clear steer on who is responsible for implementing policies and proposals, by when and the resources that will be required.
- 1.3 The National Planning Policy Framework (NPPF, 2019) clearly sets out at Paragraph 8 that the delivery of infrastructure is key to the creation of sustainable communities. Paragraph 20 requires that delivery of infrastructure is key to the identification of strategic policies within a local plan. Linked to this is the effective collaboration with infrastructure providers from early in the plan making process as identified within Paragraph 25.
- 1.4 The IDP has been informed by a range of programmes which impact on spatial planning. It is a 'live' document and will be reviewed and monitored regularly to ensure that it includes the most up to date information. Any identified costs are based on the best available information at the time of publication, and will be subject to change during the plan period.

2. Draft Local Plan Context

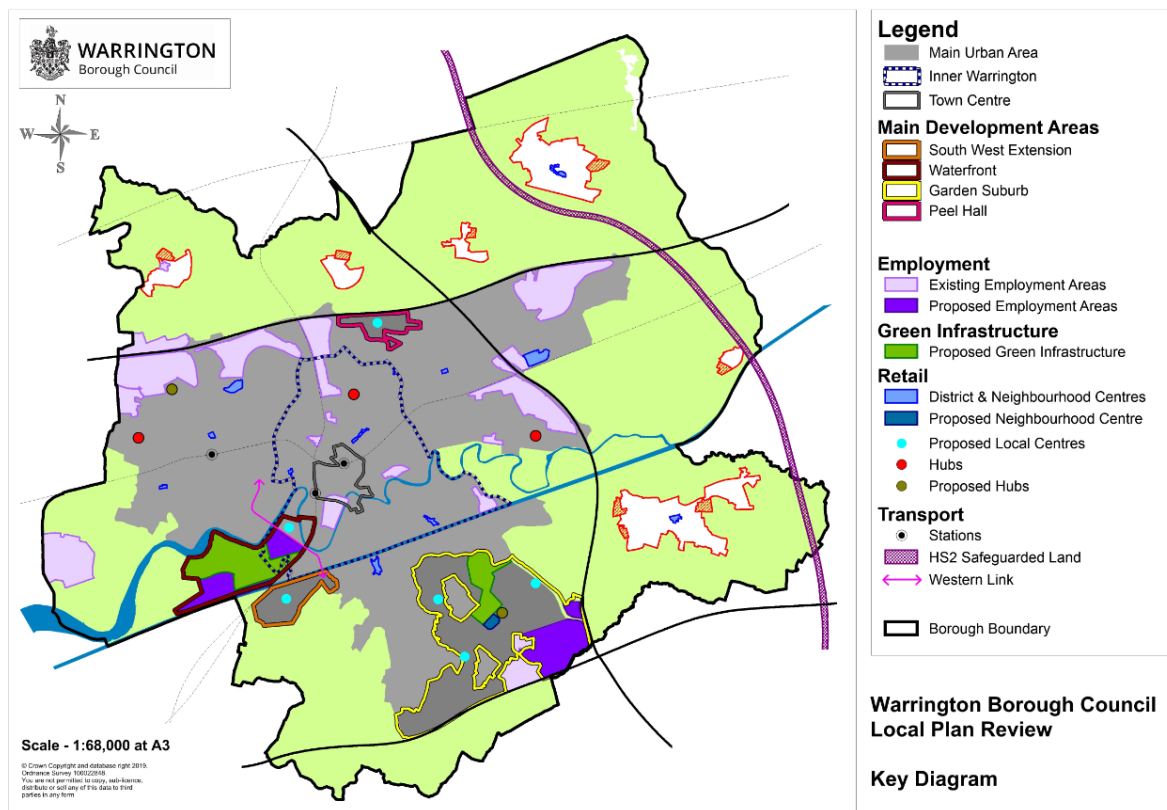
Overall Strategy

- 2.1 Warrington's emerging Local Plan is the overarching strategic policy document which sets out the planning framework to guide the location and level of development in the Borough up to 2037.
- 2.2 The Council has worked with its partners, including service and infrastructure providers, throughout the process and will continue to engage partners to achieve the agreed outcomes. As such the Proposed Submission Version Local Plan sets out a number of guiding principles in the form of strategic objectives which will guide and influence future development in the Borough. Between 2017 and 2037, the Local Plan seeks to deliver a minimum of 18,900 homes and support growth in the local and sub-regional economy by providing 362 hectares of employment land.
- 2.3 The Plan's main priority remains to optimise the development potential of the existing urban area. As such a number of key elements of the previous Plan's spatial strategy therefore remain. This includes intensifying development in the town centre, the inner area of Warrington and opening up the Waterfront as a new urban quarter facilitated by the proposed Western Link.
- 2.4 It is not possible however to meet all of Warrington's development needs within the existing urban area. The Plan's spatial strategy has therefore been developed to meet the full need for new homes, employment land and retail supported by wide-ranging infrastructure improvements over the plan period.

Strategic Locations

- 2.5 A number of main development areas have been identified within the Proposed Submission Version Local Plan. These are locations that are of importance to the overall spatial strategy of the plan and will be a focus for development over the plan period. These are:
- Town Centre
 - Waterfront and Port Warrington
 - Peel Hall
 - Garden Suburb
 - South West Extension
- 2.6 As part of the spatial strategy, some incremental development will also be directed to the outlying settlements of Burtonwood, Winwick, Hollins Green, Lymm, Culcheth and Croft.

Figure 2.1: Proposed Submission Version Local Plan – Key Diagram



- 2.7 The IDP Schedule which is included at Appendix 1 details the projects required to support the delivery of the emerging Local Plan. It also demonstrates the extensive list of internal and external infrastructure providers that have been consulted in relation to the delivery of proposals within the Proposed Submission Version Local Plan. It is important to note that at a broad Borough-wide level Warrington can accommodate the levels of development proposed by the Proposed Submission Version Local Plan as long as a comprehensive approach is taken to the provision of infrastructure, particularly on the larger development sites.
- 2.8 A plan-wide Viability Assessment has also been undertaken and this demonstrates that the delivery of necessary infrastructure to support the levels of development proposed is viable and deliverable over the plan period. As part of this work, the Council engaged with developers on infrastructure requirements and costs for sites proposed for development in the draft plan.
- 2.9 All of the main development areas require extensive infrastructure to support their development. The Council has identified the strategic infrastructure requirements of these allocations - over and above standard on-site infrastructure and S106 planning obligations - and included these in the Viability Assessment as a per dwelling cost.

- 2.10 For the South West Extension, Waterfront and Peel Hall, this has been calculated by dividing the total estimated cost of the strategic infrastructure requirements by the number of dwellings proposed within the allocation.
- 2.11 For the Garden Suburb, the Council is proposing to facilitate the forward funding of key infrastructure requirements. For the purposes of the Local Plan Viability Assessment, the Strategic infrastructure cost for residential development has been set at £18,500 per dwelling in the first year of the development. This figure has been assessed using current estimates for the delivery of infrastructure in accordance with the Infrastructure Delivery Plan, assumed S106 contributions and the cost of advanced funding. Against this the Council has set an external public sector funding requirement. It should be noted that the funding to meet this requirement has not been confirmed at this stage. The financing to support this enabling infrastructure is the subject of ongoing discussions.
- 2.12 It is anticipated that the strategic infrastructure figure for the Garden Suburb will vary as the current data it is based upon is refined. It is also anticipated that the cost will rise in line with inflation related to cost of development and the value of houses developed on the site. Similarly, the costs of the strategic infrastructure for the other main development areas may also vary as the development proposals for the allocations are worked up in more detail.

Next Steps

- 2.13 The Council and its partners recognise that the requisite levels of infrastructure can be delivered and all partners aim to adopt a proactive approach towards ensuring the timely and co-ordinated provision of appropriate high quality infrastructure to support Warrington's communities.
- 2.14 In order to co-ordinate this approach the Council aims:
- To encourage investment in and improvement of existing infrastructure.
 - To work in partnership with internal and external stakeholders to ensure the timely and co-ordinated provision of high quality infrastructure that supports future growth.
 - To assess the infrastructure needs and requirements which will support growth in the Borough through the IDP.
 - To monitor and review the IDP on a regular basis to ensure that future infrastructure needs are considered and updated.

Appendix 1 – Infrastructure Delivery Schedule

CATEGORY	TOPIC	PROJECT	WHERE [PLACE MAKING AREA]	INDICATIVE COST	INDICATIVE COST	FUNDING CONFIRMED	FUNDING GAP	FUNDING SOURCE	WHO [LEAD]	PARTNERS	DELIVERY NOTES	Short Term (2017-2022)	Medium Term (2023-2028)	Long Term (2028-2038)	COMMITTED UNCERTAIN LONG TERM / ASPIRATIONAL	ADDED / UPDATED	AMENDED BY	INFORMATION SOURCE
Environmental	Flood Prevention	Sankey Brook Flood Risk Management Scheme . Mitigation of tidal, fluvial and surface water flood risk in local area	West Warrington	ENV2	£14,300,000	£500,000	£13,800,000	Environment Agency, United Utilities, DEFRA FDGI, WBC Contribution (possibly from CCF Fund)	EA	United Utilities, WBC	Barrage and pumping station owned and operated by United Utilities. OBC being developed.	>			Identified in Council/Partner Strategy	Mar-19	EG	Environment Agency
Environmental	Flood Prevention	Penketh Brook & Whittle Brook . Provision of tidal gates on Whittle Brook, flood wall to mitigate against fluvial flooding of properties.	West Warrington	ENV2	£3,340,000	£2,800,000	£540,000	Environment Agency, DERFA FCERMGI, WBC Contribution (possibly from CCF Fund)	EA	WBC	OBC being developed	>			Identified in Council/Partner Strategy	Mar-19	EG	Environment Agency
Environmental	Open Spaces	Allotment Provision New provision to address localised deficit.	East Warrington, North Warrington	DC5	£500,000	£0	£500,000	WBC capital investment, External funding sources, Developer contributions	WBC	Developers	Delivery programme TBC.	>	>		Identified in Council/Partner Strategy	Mar-19	EG	Parks and Woodlands Manager
Environmental	Open Spaces	Hillock Lane, Woolston Park creation and drainage improvement	East Warrington	DC5	£250,000	£0	£250,000	WBC capital investment, External funding sources, Developer contributions	WBC	Developers	Restoration of surplus educational land for park and sports use. Awaiting external funding.	>	>		Identified in Council/Partner Strategy	Mar-19	EG	Parks and Woodlands Manager
Environmental	Open Spaces	Hollinfare Park, Rixton Enhancement of village green to park	East Warrington	DC5	£350,000	£0	£350,000	WBC capital investment, External funding sources, Developer contributions	WBC	Friends of Hollinfare Cemetery, Developers	Awaiting external funding.	>	>		Identified in Council/Partner Strategy	Mar-19	EG	Parks and Woodlands Manager
Environmental	Open Spaces	Larkfield Park, Woolston Access improvements and park enhancements	East Warrington	DC5	£200,000	£33,667	£166,333	WBC capital investment, External funding sources, Developer contributions	WBC	Developers	£22000 from Bruche S106, £11,667 (33% of Lilford S106). To be completed Spring 2019.	>			Committed	Mar-19	EG	Parks and Woodlands Manager
Environmental	Open Spaces	Longbarn Park, Fearnhead Park enhancements, including drainage and access improvements	East Warrington	DC5	£300,000	£0	£300,000	WBC capital investment, External funding sources, Developer contributions	WBC	Friends of Longbarn Park, Bay Malton Angling Club, Developers	Currently underway.	>			Committed	Mar-19	EG	Parks and Woodlands Manager
Environmental	Open Spaces	Mee Brow, Culcheth Park enhancements, including equipped play facilities.	East Warrington	DC5	£200,000	£10,000	£190,000	WBC capital investment, External funding sources, Developer contributions	WBC	Developers	Currently underway.	>			Committed	Mar-19	EG	Parks and Woodlands Manager
Environmental	Open Spaces	Parkfields Park, Fearnhead Park enhancements	East Warrington	DC5	£200,000	£0	£200,000	WBC capital investment, External funding sources, Developer contributions	WBC	Developers		>			Uncertain	Mar-19	EG	Parks and Woodlands Manager
Environmental	Open Spaces	Risley Moss Phase 1 - habitat restoration and enhancement	East Warrington	DC4, DC5	£300,000	£11,667	£288,333	WBC capital investment, External funding sources, Developer contributions	WBC	Mersey Forest, Developers	£11,667 (33% of Lilford S106). Currently underway.	>			Committed	Mar-19	EG	Parks and Woodlands Manager
Environmental	Open Spaces	Rixton Clay Pits Habitat restoration and enhancement	East Warrington	DC4, DC5	£200,000	£11,667	£188,333	WBC capital investment, External funding sources, Developer contributions	WBC	Developers	£11,667 (33% of Lilford S106). Currently underway.	>			Committed	Mar-19	EG	Parks and Woodlands Manager
Environmental	Open Spaces	Causeway Park Site improvements	Inner Warrington	DC5	£80,000	£2,000	£78,000	Developer contributions	WBC	Developers	£2000 from Greenalls S106. Currently underway.	>			Committed	Mar-19	EG	Parks and Woodlands Manager
Environmental	Open Spaces	St. Elphins Park Access improvements and park enhancements	Inner Warrington, North Warrington	DC5	£300,000	£0	£300,000	WBC capital investment, External funding sources, Developer contributions	WBC	Friends of St.Elphins Park, Developers	Phase 1 completed.	>			Identified in Council/Partner Strategy	Mar-19	EG	Parks and Woodlands Manager
Environmental	Open Spaces	Victoria Park Skate park improvements	Inner Warrington, North Warrington	DC5, INF4	£300,000	£0	£300,000	WBC capital investment, External funding sources, Developer contributions	WBC	Developers		>	>		Identified in Council/Partner Strategy	Mar-19	EG	Parks and Woodlands Manager
Environmental	Open Spaces	Appleton Thorn New equipped play facility and informal space to address local deficit of provision	South Warrington	DC5	£300,000	£300,000	£0	Developer contributions	WBC	Developers	To be provided on site as part of major development	>			Committed	Mar-19	EG	Parks and Woodlands Manager
Environmental	Open Spaces	Appleton New equipped play facility to address local deficit of provision	South Warrington	DC5	£150,000	£150,000	£0	Developer contributions	WBC	Developers	To be provided on site as part of major development	>			Committed	Mar-19	EG	Parks and Woodlands Manager
Environmental	Open Spaces	Crossfield Bridge, Lymm Access improvements and infrastructure upgrades	South Warrington	DC5	£800,000	£0	£800,000	WBC capital investment, External funding sources, Developer contributions	WBC	Developers	HLF funding bids previously unsuccessful	>			Identified in Council/Partner Strategy	Mar-19	EG	Parks and Woodlands Manager

CATEGORY	TOPIC	PROJECT	WHERE [PLACE MAKING AREA]	INDICATIVE COST	INDICATIVE COST	FUNDING CONFIRMED	FUNDING GAP	FUNDING SOURCE	WHO [LEAD]	PARTNERS	DELIVERY NOTES	Short Term (2017-2022)	Medium Term (2023-2028)	Long Term (2028-2038)	COMMITTED UNCERTAIN LONG TERM / ASPIRATIONAL	ADDED / UPDATED	AMENDED BY	INFORMATION SOURCE
Environmental	Open Spaces	Lymm Dam Improvements to infrastructure and access upgrades	South Warrington	DC3, DC5	£300,000	£300,000	£0	WBC capital investment, External funding sources, Developer contributions	WBC		Currently underway.	>			Committed	Mar-19	EG	Parks and Woodlands Manager
Environmental	Open Spaces	Trans Pennine Trail (Grappenhall-Heatley section) Access improvements and surface upgrades for walking and cycling	South Warrington	DC3, DC5	£1,000,000	£0	£1,000,000	WBC capital investment, External funding sources, Developer contributions	WBC	Developers		>	>		Identified in Council/Partner Strategy	Mar-19	EG	Parks and Woodlands Manager
Environmental	Open Spaces	Gatewath, Sankey Bridges Habitat creation and access improvements	West Warrington	DC4, DC5	£800,000	£404,104	£395,896	WBC capital investment, External funding sources, Developer contributions	WBC	Developers	£404,104k funding secured (including £104,104 from Omega South S106 and Omega Z7 S106 - £300K). Currently underway.	>			Committed	Mar-19	EG	Parks and Woodlands Manager
Environmental	Open Spaces	Mary Ann Meadows, Westbrook New equipped play facilities to address deficit of provision	West Warrington	DC5	£150,000	£0	£150,000	WBC capital investment, External funding sources, Developer contributions	WBC	Developers		>			Identified in Council/Partner Strategy	Mar-19	EG	Parks and Woodlands Manager
Environmental	Open Spaces	Omega New equipped play facilities to address deficit of provision	West Warrington	DC5	£120,000	£120,000	£0	Developer contributions	WBC	Developers	To be provided on site as part of major development. Currently underway.	>			Committed	Mar-19	EG	Parks and Woodlands Manager
Environmental	Open Spaces	Sankey Valley Park Access improvements and canal restoration	West Warrington	DC3, DC5	£1,000,000	£0	£1,000,000	WBC capital investment, External funding sources, Developer contributions	WBC	Halton Borough Council, St. Helens Council & United Utilities,		>	>	>	Identified in Council/Partner Strategy	Mar-19	EG	Parks and Woodlands Manager
Environmental	Open Spaces	Garden Suburb Provision of country park	South Warrington	MD2, DC5	£13,000,000		£13,000,000	Private sector, developers	WBC		Proposed allocation in Draft Local Plan. Accounted for as part of wider strategic infrastructure costs for site allocations.		>	>	Identified in Council/Partner Strategy	Mar-19	EG	Draft Local Plan
Environmental	Open Spaces	Garden Suburb Provision of open space	South Warrington	MD2, DC5	TBC			Private sector, developers	WBC		Proposed allocation in Draft Local Plan. Accounted for as part of wider strategic infrastructure costs for site allocations.		>	>	Identified in Council/Partner Strategy	Mar-19	EG	Draft Local Plan
Environmental	Open Spaces	South West Extension Provision of local park, open space	South Warrington	MD3, DC5	TBC			Private sector, developers	WBC		Proposed allocation in Draft Local Plan. Accounted for as part of wider strategic infrastructure costs for site allocations.		>	>	Identified in Council/Partner Strategy	Mar-19	EG	Draft Local Plan
Environmental	Open Spaces	Waterfront Provision of country park, open space	Inner Warrington	MD1, DC5	TBC			Private sector, developers	WBC		Proposed allocation in Draft Local Plan. Accounted for as part of wider strategic infrastructure costs for site allocations.		>	>	Identified in Council/Partner Strategy	Mar-19	EG	Draft Local Plan
Environmental	Open Spaces	Peel Hall Provision of open space	North Warrington	MD4, DC5	TBC			Private sector, developers	WBC		Proposed allocation in Draft Local Plan. Accounted for as part of wider strategic infrastructure costs for site allocations.		>	>	Identified in Council/Partner Strategy	Mar-19	EG	Draft Local Plan
Environmental	Sport and Leisure	Birchwood Forest Park New 3G pitch provision to provide sports participation capacity	East Warrington	INF4	£600,000	£0	£600,000	WBC capital investment, Developer contributions, FA funding, External funding	WBC	FA, Developers	Delivery programme TBC as part of Council's Playing Pitch Strategy.	>	>	>	Identified in Council/Partner Strategy	Mar-19	EG	Parks and Woodlands Manager
Environmental	Sport and Leisure	Birchwood Forest Park Pitch drainage improvements and upgrading of changing facilities.	East Warrington	INF4	£340,000	£340,000	£0	WBC capital investment, Developer contributions, FA funding	WBC	Birchwood Junior AFC, FA, Developers	As individual projects - Sports pitch drainage / construction (£240k), upgrading of changing facilities (£100k). Phase 1 to commence 2019.	>			Committed	Mar-19	EG	Parks and Woodlands Manager
Environmental	Sport and Leisure	Crab Lane Playing Fields, Fearnhead Replacement of changing facilities and development of 3G sports training facilities	East Warrington	INF4	£700,000	£0	£700,000	WBC capital investment, Developer contributions, FA funding	WBC	Fife Rangers FC, FA, Developers	As individual projects - Replacement of changing facilities (£200k), development of 3G sports training facilities (£500k). Delivery Programme TBC as part of Council's Playing Pitch Strategy.	>			Identified in Council/Partner Strategy	Mar-19	EG	Parks and Woodlands Manager
Environmental	Sport and Leisure	Shaw Street Recreation Ground, Culcheth New 3G pitch provision to provide sports participation capacity	East Warrington	INF4	£600,000	£0	£600,000	WBC capital investment, Developer contributions, FA funding, External funding	WBC	FA, Developers	Delivery programme TBC as part of Council's Playing Pitch Strategy.	>	>	>	Identified in Council/Partner Strategy	Mar-19	EG	Parks and Woodlands Manager
Environmental	Sport and Leisure	Shaw Street Recreation Ground, Culcheth Pitch improvements	East Warrington	INF4	£200,000	£0	£200,000	WBC capital investment, FA funding, Developer contributions	WBC	FA, Developers	Delivery programme TBC as part of Council's Playing Pitch Strategy.	>			Identified in Council/Partner Strategy	Mar-19	EG	Parks and Woodlands Manager
Environmental	Sport and Leisure	Woolston, Hillock Lane New 3G pitch provision to provide sports participation capacity	East Warrington	INF4	£600,000	£0	£600,000	WBC capital investment, Developer contributions, FA funding, External funding	WBC	FA, Developers	Delivery programme TBC as part of Council's Playing Pitch Strategy.	>	>	>	Identified in Council/Partner Strategy	Mar-19	EG	Parks and Woodlands Manager
Environmental	Sport and Leisure	Dallam & Bewsey New 3G pitch provision to provide sports participation capacity	Inner Warrington, North Warrington	INF4	£600,000	£0	£600,000	WBC capital investment, Developer contributions, FA funding, External funding	WBC	FA, Developers	Delivery programme TBC as part of Council's Playing Pitch Strategy.	>	>	>	Identified in Council/Partner Strategy	Mar-19	EG	Parks and Woodlands Manager
Environmental	Sport and Leisure	Loushers Lane Playing Fields, Latchford Sports pitch drainage / construction, changing facilities and car park upgrade / extension	Inner Warrington, North Warrington	INF4	£680,000	£0	£680,000	WBC capital investment, Developer contributions, FA funding	WBC	Warrington Town JFC, FA, Developers	As individual projects - sports pitch drainage / construction (£280k), Changing facilities (£250k), car park upgrade / extension (£150k). Delivery Programme TBC as part of Council's Playing Pitch Strategy.	>			Identified in Council/Partner Strategy	Mar-19	EG	Parks and Woodlands Manager

CATEGORY	TOPIC	PROJECT	WHERE [PLACE MAKING AREA]	INDICATIVE COST	INDICATIVE COST	FUNDING CONFIRMED	FUNDING GAP	FUNDING SOURCE	WHO [LEAD]	PARTNERS	DELIVERY NOTES	Short Term (2017-2022)	Medium Term (2023-2028)	Long Term (2028-2038)	COMMITTED UNCERTAIN LONG TERM / ASPIRATIONAL	ADDED / UPDATED	AMENDED BY	INFORMATION SOURCE
Environmental	Sport and Leisure	Morley Common New pitch provision (including 3G) to provide sports participation capacity	Inner Warrington, North Warrington	INF4	£600,000	£100,000	£500,000	WBC capital investment, Developer contributions, FA funding, External funding	WBC	FA, Developers	£90,000 from Greenalls S106, £10000 from Ship Inn S106. Delivery Programme TBC as part of Council's Playing Pitch Strategy	>	>	>	Identified in Council/Partner Strategy	Mar-19	EG	Parks and Woodlands Manager
Environmental	Sport and Leisure	Radley Common, Houghton Green Pitch drainage improvements and replacement changing facilities	Inner Warrington, North Warrington	INF4	£500,000	£0	£500,000	WBC capital investment, FA funding, Developer contributions	WBC	Winwick FC, FA, Developers	Relates to Peel Hall Allocation in Draft Local Plan.	>	>		Identified in Council/Partner Strategy	Mar-19	EG	Parks and Woodlands Manager
Environmental	Sport and Leisure	Victoria Park Bowling Green Extend bowling pavilion, installation of shelters.	Inner Warrington, North Warrington	INF4	£2,000,000	£2,000,000	£0	WBC, Developer contributions	WBC	Developers	Currently underway.	>			Committed	Mar-19	EG	Parks and Woodlands Manager
Environmental	Sport and Leisure	Victoria Park Improvements to athletics spectator infrastructure	Inner Warrington, North Warrington	INF4	£300,000	£300,000	£0	WBC, Developer contributions	WBC	Developers	Due to commence 2019/2020.	>			Committed	Mar-19	EG	Parks and Woodlands Manager
Environmental	Sport and Leisure	Victoria Park New 3G pitch provision to provide sports participation capacity	Inner Warrington, North Warrington	INF4	£600,000	£0	£600,000	WBC capital investment, Developer contributions, FA funding, External funding	WBC	FA, Developers	Precise location TBC. Delivery Programme TBC as part of Council's Playing Pitch Strategy	>	>	>	Identified in Council/Partner Strategy	Mar-19	EG	Parks and Woodlands Manager
Environmental	Sport and Leisure	Westy Park Pitch improvements	Inner Warrington, North Warrington	INF4	£300,000	£208,000	£92,000	WBC capital investment, Developer contributions	WBC	Developers	£208k of developer contributions allocated to date (Greenalls S106). Completion due winter 2018.	>			Committed	Mar-19	EG	Parks and Woodlands Manager
Environmental	Sport and Leisure	Appleton Thorn Field, New Lane Development of site as community parkland: sports pitches, changing facilities, car park upgrade / extension, access improvements, equipped play facilities	South Warrington	INF4	£770,000	£0	£770,000	FA / RU funding, Developer contributions	Appleton Boys & Warrington RU Club	HCA, Grappenhall AFC, Warrington Town Juniors, RFU, Developers	Land in HCA ownership. Individual project breakdown - sports pitches (£200k), Changing facilities (£250k), car park upgrade / extension (£100k), access improvements (£100k), equipped play facilities (£120k).	>			Identified in Council/Partner Strategy	Mar-19	EG	Parks and Woodlands Manager
Environmental	Sport and Leisure	Appleton New 3G pitch provision to provide sports participation capacity	South Warrington	INF4	£600,000	£0	£600,000	WBC capital investment, Developer contributions, FA funding, External funding	WBC	FA, Developers	Precise location TBC. Delivery Programme TBC as part of Council's Playing Pitch Strategy.	>	>	>	Identified in Council/Partner Strategy	Mar-19	EG	Parks and Woodlands Manager
Environmental	Sport and Leisure	Lymm New 3G pitch provision to provide sports participation capacity	South Warrington	INF4	£600,000	£0	£600,000	WBC capital investment, Developer contributions, FA funding, External funding	WBC	FA, Developers	Precise location TBC. Delivery Programme TBC as part of Council's Playing Pitch Strategy.	>	>	>	Identified in Council/Partner Strategy	Mar-19	EG	Parks and Woodlands Manager
Environmental	Sport and Leisure	Ridgway Grundy, Lymm Sports pitch drainage / construction & upgrading of changing facilities	South Warrington	INF4	£300,000	£0	£300,000	WBC capital investment, FA funding, Developer contributions	WBC	FA, Developers	As individual projects - sports pitch drainage / construction (£100k), upgrading of changing facilities (£200k). Delivery Programme TBC as part of Council's Playing Pitch Strategy	>			Identified in Council/Partner Strategy	Mar-19	EG	Parks and Woodlands Manager
Environmental	Sport and Leisure	Sandy Lane, Lymm Changing facilities	South Warrington	INF4	£100,000	£0	£100,000	WBC capital investment, FA funding, Developer contributions	WBC	FA, Developers	Delivery programme TBC as part of Council's Playing Pitch Strategy.	>			Identified in Council/Partner Strategy	Mar-19	EG	Parks and Woodlands Manager
Environmental	Sport and Leisure	Sow Brook Playing Field, Lymm Development of underutilised sports facilities to include sports pitch drainage / construction, changing facilities and car park upgrade / extension	South Warrington	INF4	£680,000	£0	£680,000	WBC capital investment, FA funding, Developer contributions	WBC	Lymm Piranhas JFC, FA, Developers	As individual projects - development of underutilised sports facilities to include sports pitch drainage / construction (£280k), Changing facilities (£250k), car park upgrade / extension (£150k). Delivery programme TBC as part of Council's Playing Pitch Strategy.	>			Identified in Council/Partner Strategy	Mar-19	EG	Parks and Woodlands Manager
Environmental	Sport and Leisure	Crosfields / Hood Lane Recreation Ground Car park upgrade / extension and development of 3G sports training facilities	West Warrington	INF4	£750,000	£0	£750,000	WBC capital investment, Developer contributions, FA funding, External funding	WBC	FA, Developers	As individual projects - car park upgrade / extension (£250k) and development of 3G sports training facilities (£500k). Delivery programme TBC as part of Council's Playing Pitch Strategy.	>	>	>	Identified in Council/Partner Strategy	Mar-19	EG	Parks and Woodlands Manager
Environmental	Sport and Leisure	Doe Green Playing Fields, Penketh Pitch drainage improvements	West Warrington	INF4	£80,000	£0	£80,000	WBC capital investment, Developer contributions, FA funding	WBC	Penketh United JFC, FA, Developers	Delivery programme TBC as part of Council's Playing Pitch Strategy.	>			Identified in Council/Partner Strategy	Mar-19	EG	Parks and Woodlands Manager
Environmental	Sport and Leisure	Mary Ann Meadows, Westbrook Pitch drainage improvements	West Warrington	INF4	£185,000	£35,630	£149,370	WBC capital investment, Environment Agency investment, FA funding	WBC	Cromwell Athletic AFC, FA, Developers	Works commenced on phase 1 of drainage improvements funded by FA (£35,000). £630 from Whittle Hall 16 S106.	>			Identified in Council/Partner Strategy	Mar-19	EG	Parks and Woodlands Manager
Environmental	Sport and Leisure	Omega Changing facilities, development of 3G sports training facilities and sports turf playing facilities	West Warrington	INF4	£1,100,000	£0	£1,100,000	WBC capital investment, Developer contributions, FA funding, External funding	WBC	FA, Developers	Currently subject to development proposals.	>	>	>	Committed	Mar-19	EG	Parks and Woodlands Manager
Environmental	Sport and Leisure	Thornton Road Recreation Ground, Great Sankey Pitch improvements and upgrade of changing facilities	West Warrington	INF4	£170,000	£73,586	£96,414	WBC capital investment, FA funding, Developer contributions	WBC	Eagles Football Club, FA, Developers	Phase 1 pitch improvements commenced (£20k capital investment). Further £53,586 from Saxon Park East S106.	>			Identified in Council/Partner Strategy	Mar-19	EG	Parks and Woodlands Manager
Environmental	Sport and Leisure	Closed Road Cycle Circuit Location to be determined.	Borough wide	INF4	£650,000	£0	£650,000	WBC capital investment, Sport England, developer contributions, External funding	WBC	Sport England, Developers		>			Identified in Council/Partner Strategy	Mar-19	EG	Parks and Woodlands Manager
Environmental	Sport and Leisure	Waterfront Provision of playing pitches	Inner Warrington	MD1, DC5	TBC			Developers, private sector	WBC	Livewire, developers	Proposed allocation in Draft Local Plan. Accounted for as part of wider strategic infrastructure costs for site allocations.		>		Identified in Council/Partner Strategy	Mar-19	EG	Draft Local Plan

CATEGORY	TOPIC	PROJECT	WHERE [PLACE MAKING AREA]	INDICATIVE COST	INDICATIVE COST	FUNDING CONFIRMED	FUNDING GAP	FUNDING SOURCE	WHO [LEAD]	PARTNERS	DELIVERY NOTES	Short Term (2017-2022)	Medium Term (2023-2028)	Long Term (2028-2038)	COMMITTED UNCERTAIN LONG TERM / ASPIRATIONAL	ADDED / UPDATED	AMENDED BY	INFORMATION SOURCE
Environmental	Sport and Leisure	Garden Suburb Provision of playing pitches	South Warrington	MD2, DC5	See Garden Suburb Community Hub			Developers, private sector	WBC	Livewire, developers	Proposed allocation in Draft Local Plan. Accounted for as part of wider strategic infrastructure costs for site allocations.		>		Identified in Council/Partner Strategy	Mar-19	EG	Draft Local Plan
Environmental	Sport and Leisure	Garden Suburb Provision of new leisure centre	South Warrington	MD2, DC5, INF4	See Garden Suburb Community Hub			Developers, private sector	WBC	Livewire, developers	Proposed allocation in Draft Local Plan. Accounted for as part of wider strategic infrastructure costs for site allocations.		>		Identified in Council/Partner Strategy	Mar-19	EG	Draft Local Plan
Environmental	Sport and Leisure	South West Extension Provision of playing pitches or contribution towards off-site provision.	South Warrington	MD3, DC5	TBC			Developers, private sector	WBC	Livewire, developers	Proposed allocation in Draft Local Plan. Accounted for as part of wider strategic infrastructure costs for site allocations.		>		Identified in Council/Partner Strategy	Mar-19	EG	Draft Local Plan
Environmental	Sport and Leisure	Peel Hall Provision of new sports pitches and ancillary changing facilities (including relocation of pitches at Mill Lane)	North Warrington	MD4, DC5	TBC			Developers, private sector	WBC	Livewire, developers	Proposed allocation in Draft Local Plan. Accounted for as part of wider strategic infrastructure costs for site allocations.		>		Identified in Council/Partner Strategy	Mar-19	EG	Draft Local Plan
Social	Affordable Housing	Social Affordable Housing S106 Contributions	Borough wide	DEV2	£1,600,000	£1,600,000	£0	Developer contributions	WBC	Registered providers	In instances where WBC accept a commuted sum in lieu of on-site provision. This money is pooled and will be used to assist registered providers in delivering schemes of affordable homes in various locations around the borough.	>	>	>	Identified in Council/Partner Strategy	Mar-19	EG	Section 106 Monitor
Social	Community Facilities	Dallam Regeneration Programme New Community Hub on Longshaw Street; replacement changing rooms on Longshaw Street Playing Fields and regeneration of Harrison Square	Inner Warrington, North Warrington	INF4	TBC	TBC	TBC	WBC	WBC		The project has been delayed. A new business case is being prepared.	>			Identified in Council/Partner Strategy	Mar-19	EG	Leisure Community Services
Social	Community Facilities	Great Sankey Neighbourhood Hub A proposed re-development of the leisure centre to form a neighbourhood hub complex comprising demolition of part of the existing building; new two storey facilities with plant to provide sports, leisure and health services; the creation of a new access road with junction at Lingley Green Avenue; new car parking and associated lighting and landscaping.	West Warrington	INF4	£16,000,000	£16,000,000	£0	WBC, Developer contributions	Livewire	WBC, Clinical Commissioning Group, Sport England, Great Sankey High School, Developers	Completion due 2019.	>			Committed	Mar-19	EG	Livewire
Social	Community Facilities	Heritage Hub Create a new community heritage and learning hub in the current Central Library and Museum building to be a key visitor destination. The hub will provide accessible spaces for learning and improved digital access. The town centre attraction will be a central hub and be linked to LiveWire's network of libraries and community hubs to create an inclusive offer across the neighbourhoods.	Town Centre and borough wide	INF4	£12,000,000	£1,000,000	£11,000,000	Heritage Lottery Fund; ACE; other grant making bodies; WBC as owner of the building and collections; Developer contributions	WBC	Heritage Lottery Fund, Developers		>	>		Identified in Council/Partner Strategy	Mar-19	EG	Culture Warrington/WBC
Social	Community Facilities	Walton Hall & Estate Upgrading (Phase 1) Initial phase to include extension to the Hall to provide toilet new block and new toilet block building at the zoo. cafe and an repairs to the riding school roof. Later phases to include drainage improvements across the Estate.	South Warrington	DC1	£2,400,000	£2,400,000	£0	WBC	WBC		Project now nearing completion, improvements to hard surfacing and landscaping being completed, essential repairs to listed buildings and structures.	>			Committed	Mar-19	EG	WBC estates/ infrastructure
Social	Community Facilities	Walton Hall & Estate Upgrading (Phase 2) Project to reinstate the listed glasshouses into a learning centre and college.	South Warrington	DC1	£5,100,000	£1,500,000	£3,600,000	WBC, Developer contributions	WBC	Myerscough College / Walton Lea Partnership / Community		>	>		Identified in Council/Partner Strategy	Mar-19	EG	WBC estates/ infrastructure
Social	Community Facilities	Walton Hall & Estate Upgrading (Phase 3) Project to enhance the financial viability of the estate, including repair of riding school, repair of heritage units and strategic investments in energy, water and drainage across the estate.	South Warrington	DC1	£4,000,000	£0	£4,000,000	WBC, Developer contributions	WBC	Various			>	>	Longer term / aspirational	Mar-19	EG	WBC estates/ infrastructure

CATEGORY	TOPIC	PROJECT	WHERE [PLACE MAKING AREA]	INDICATIVE COST	INDICATIVE COST	FUNDING CONFIRMED	FUNDING GAP	FUNDING SOURCE	WHO [LEAD]	PARTNERS	DELIVERY NOTES	Short Term (2017-2022)	Medium Term (2023-2028)	Long Term (2028-2038)	COMMITTED UNCERTAIN LONG TERM / ASPIRATIONAL	ADDED / UPDATED	AMENDED BY	INFORMATION SOURCE
Social	Community Facilities	New Library and Community Centre, Culcheth	Culcheth	INF4	£900,000	£0	£900,000	Developer contributions, WBC	WBC	Livewire		>	>		Identified in Council/Partner Strategy	Mar-19	EG	Leisure/Community services
Social	Community Facilities	Garden Suburb Community Hub New community facility comprising leisure and health services	South Warrington	MD2, INF4	£20,000	£0	£20,000	Developer contributions, WBC	WBC	Livewire			>	>	Identified in Council/Partner Strategy	Mar-19	EG	Leisure/Community services, Livewire, Draft Local Plan
Social	Community Facilities	New Community Recycling Centre within Garden Suburb	South Warrington	MD2, INF4, ENV1	TBC				WBC				>		Identified in Council/Partner Strategy	Mar-19	EG	WBC Waste Services
Social	Education (Primary)	St Philips CE Primary (Westbrook) Expansion to 3FE	East Warrington	INF4	£2,300,000	£2,300,000	£0	DFE/ WBC	WBC	CE Diocese (Liverpool)	Project ongoing.	>			Committed	Mar-19	EG	Education Service
Social	Education (Primary)	Additional Catholic Primary Places	West Warrington	INF4	TBC	£0	£0	DFE/ WBC	WBC	Liverpool Arch Diocese		>	>		Longer term / aspirational	Mar-19	EG	Education Service
Social	Education (Primary)	Chapelord Village Primary School Expansion to 3FE	West Warrington	INF4	£1,634,000	£1,634,000	£0	DFE/ WBC	WBC		Project ongoing.	>			Committed	Mar-19	EG	Education Service
Social	Education (Primary)	Park Road Primary School Expansion to 2FE	West Warrington	INF4	TBC	£0	£0	DFE/ WBC	WBC			>			Longer term / aspirational	Mar-19	EG	Education Service
Social	Education (Primary)	Grappenhall Heys primary school contribution	South Warrington	INF4	£1,500,000	£1,500,000	£0	Developer contributions	WBC	Developers	S106 contribution secured as part of Homes England planning consent.	>			Committed	Mar-19	EG	S106 monitor
Social	Education (Primary)	Garden Suburb New primary school provision within Garden Suburb providing a minimum of 7 forms of entry.	South Warrington	MD2, INF4	£22,500,000	£0	£22,500,000	Developer contributions	WBC	Developers	Proposed allocation in Draft Local Plan.		>		Identified in Council/Partner Strategy	Mar-19	EG	Education Service
Social	Education (Primary)	South West Extension New primary school provision providing a minimum of 2 forms of entry.	South Warrington	MD3, INF4	£7,500,000	£0	£7,500,000	Developer contributions	WBC	Developers	Proposed allocation in Draft Local Plan.		>		Identified in Council/Partner Strategy	Mar-19	EG	Education Service/ Warrington & Co
Social	Education (Primary)	Waterfront New primary school provision providing a minimum of 2 forms of entry.	Inner Warrington	MD1, INF4	£7,500,000	£0	£7,500,000	Developer contributions	WBC	Developers	Proposed allocation in Draft Local Plan.		>		Identified in Council/Partner Strategy	Mar-19	EG	Education Service/ Warrington & Co
Social	Education (Primary)	Peel Hall New primary school of 1 form entry with capacity to expand to 2 form entry.	North Warrington	MD4, INF4	£7,500,000	£0	£7,500,000	Developer contributions	WBC	Developers	Proposed allocation in Draft Local Plan.		>		Identified in Council/Partner Strategy	Mar-19	EG	Education Service/ Warrington & Co
Social	Education (Primary)	Lymm Primary School Contribution to enhance existing facilities.			£2,612,190	£0	£2,612,190	Developer contributions	WBC	Developers	Proposed allocation in Draft Local Plan.		>		Identified in Council/Partner Strategy	Mar-19	EG	Education Service/ Warrington & Co
Social	Education (Primary)	Burtonwood Primary School Contribution to enhance existing facilities.			£2,612,190	£0	£2,612,190	Developer contributions	WBC	Developers	Proposed allocation in Draft Local Plan.		>		Identified in Council/Partner Strategy	Mar-19	EG	Education Service/ Warrington & Co
Social	Education (Primary)	Culcheth Primary School Contribution to enhance existing facilities.			£2,612,190	£0	£2,612,190	Developer contributions	WBC	Developers	Proposed allocation in Draft Local Plan.		>		Identified in Council/Partner Strategy	Mar-19	EG	Education Service/ Warrington & Co
Social	Education (Secondary)	Grappenhall Heys secondary school contribution	South Warrington	INF4	£1,100,000	£1,100,000	£0	Developer contributions	WBC	Developers	S106 contributio secured as part of Homes England planning consent.	>			Committed	Mar-19	EG	S106 monitor
Social	Education (Secondary)	Additional secondary places West Warrington	West Warrington	INF4	£7,500,000	£5,000,000	£2,500,000	DFE/ WBC, Developer contributions	WBC	Developers	Need to determine how additional places will be delivered - expand existing or new provision? Feasibility work ongoing.	>			Identified in Council/Partner Strategy	Mar-19	EG	Education Service
Social	Education (Secondary)	Garden Suburb New secondary school within the Garden Suburb providing a minimum of 6 forms of entry.	South Warrington	MD2, INF4	£30,000,000	£0	£30,000,000	Developer contributions	WBC	Developers	Proposed allocation in Draft Local Plan.		>		Identified in Council/Partner Strategy	Mar-19	EG	Education Service/ Warrington & Co
Social	Specialist Housing for Gypsies, Travellers and Travelling Showpeople	National Traveller Pitch Funding Programme To deliver 10 pitches for travelling showpeople	Borough wide	DEV3	£560,000	£560,000	£0	HCA	Plus Dane Housing Group	WBC	Sites identified - Plot 16 Athlone Road, planning permission for 5 pitches. Application also submitted for 5 pitches on Athlone Road/Winwick Road - not yet determined.	>			Committed	Mar-19	EG	Warrington & Co
Social	Transit Site for Travellers	Transit Site Accommodation for Travellers To identify a site and bring forward a managed transit site for travellers.	Borough wide	DEV3	£2,000,000	£2,000,000	£0	WBC	WBC			>			Committed	Mar-19	EG	Warrington & Co
Transport	Strategic Road Network	Junction 20 M6 - improvements	South Warrington	INF1	£50,000,000		£50,000,000	Developers / private sector	Highways England	Developers / private sector	Subject of a HE study			>	Identified in Council/Partner Strategy	Mar-19	EG	WBC highways
Transport	Strategic Road Network	Junction 10 M56 - improvements	South Warrington	INF1	£10,000,000		TBC	Developers / private sector	Highways England	Developers / private sector	Subject of a HE study		>		Identified in Council/Partner Strategy	Mar-19	EG	WBC highways
Transport	Strategic Road Network	M62 Junctions 10-12 Smart Motorway	North/ East Warrington	INF1	TBC			Highways England (RIS)	Highways England		On site. Completion expected by 2022.	>			Committed	Mar-19	EG	WBC highways
Transport	Strategic Road Network	M6 Junctions 21A-26 Smart Motorway	South Warrington	INF1	TBC			Highways England (RIS)	Highways England		On site. Completion expected by 2022.	>			Committed	Mar-19	EG	WBC highways

CATEGORY	TOPIC	PROJECT	WHERE [PLACE MAKING AREA]	INDICATIVE COST	INDICATIVE COST	FUNDING CONFIRMED	FUNDING GAP	FUNDING SOURCE	WHO [LEAD]	PARTNERS	DELIVERY NOTES	Short Term (2017-2022)	Medium Term (2023-2028)	Long Term (2028-2038)	COMMITTED UNCERTAIN LONG TERM / ASPIRATIONAL	ADDED / UPDATED	AMENDED BY	INFORMATION SOURCE
Transport	Strategic Road Network	M62 capacity & junction improvements	North/West/ East Warrington	INF1	TBC				Highways England			>	>		Identified in Council/Partner Strategy	Mar-19	EG	WBC highways
Transport	Strategic Road Network	M6 Capacity Improvements		INF1	TBC				Highways England			>	>		Identified in Council/Partner Strategy	Mar-19	EG	WBC highways
Transport	Local Road Network	Western Link - plus complementary junctions, eg Canons Rd/ Cromwell Ave, etc	West Warrington / South Warrington	INF2, MD1, MD3	£220,000,000	£142,500,000	£77,500,000	DIT and WBC	WBC	Other	Planned.		>		Identified in Council/Partner Strategy	Mar-19	EG	WBC highways
Transport	Local Road Network	Stag Inn junction improvements	South Warrington	INF1	£1,500,000		£1,500,000	WBC and Local Growth Fund (LGF)	WBC	Developers / private sector	Concept only. LTP4		>		Identified in Council/Partner Strategy	Mar-19	EG	WBC highways
Transport	Local Road Network	Omega Local Highways Ph 1 (Omega Boulevard)	West Warrington	INF1	£6,000,000		£6,000,000	WBC and Local Growth Fund (LGF)	WBC	Developers / private sector	Planned.	>			Identified in Council/Partner Strategy	Mar-19	EG	WBC highways
Transport	Local Road Network	Omega Local Highways Ph 2A (Burtonwood Rd / Kingswood Rd)	West Warrington	INF1	£3,000,000	£3,000,000	£0	WBC and developers	WBC	Developers / private sector	Under construction.	>			Committed	Mar-19	EG	WBC highways
Transport	Local Road Network	Omega Local Highways Ph 2B (A57/ Lingley Green Av junction)	West Warrington	INF1	£1,500,000		£1,500,000	WBC and developers	WBC	Developers / private sector	Planned.	>			Identified in Council/Partner Strategy	Mar-19	EG	WBC highways
Transport	Local Road Network	Omega Local Highways Ph 3A (Zones 3-6 junction improvements)	West Warrington	INF1	£1,900,000	£1,900,000	£0	WBC and developers	WBC	Developers / private sector	Planned.	>			Committed	Mar-19	EG	WBC highways
Transport	Local Road Network	Omega Local Highways Ph 3B (Zones 3-6 junction improvements)	West Warrington	INF1	£2,500,000	£2,500,000	£0	WBC and developers	WBC	Developers / private sector	Planned.	>			Committed	Mar-19	EG	WBC highways
Transport	Local Road Network	Omega Local Highways Ph 3C (Zones 3-6 junction improvements)	West Warrington	INF1	£1,700,000		£1,700,000	WBC and developers	WBC	Developers / private sector	Planned. LTP4	>			Identified in Council/Partner Strategy	Mar-19	EG	WBC highways
Transport	Local Road Network	Omega North Access Improvements Lockheed Road/Burtonwood Road junction	West Warrington	INF1	£2,000,000		£2,000,000	WBC and developers	WBC	Developers / private sector	Concept only.	>			Identified in Council/Partner Strategy	Mar-19	EG	WBC highways
Transport	Local Road Network	Centre Park Link (Waterfront Transport Infrastructure)	Central/ Inner Warrington	MD1	£19,900,000	£19,900,000	£0	WBC and Local Growth Fund (LGF)	WBC	Developers / private sector	Planned.	>			Committed	Mar-19	EG	WBC highways
Transport	Local Road Network	Warrington East phase 2&3	East Warrington	INF1, INF2	£21,000,000	£21,000,000	£0	Cheshire and Warrington LEP, WBC, LGF	WBC	Cheshire and Warrington LEP	Planned.	>			Committed	Mar-19	EG	WBC highways
Transport	Local Road Network	Warrington East ph 4	East Warrington	INF1, INF2	TBC				WBC	Developers / private sector	Concept only.		>		Identified in Council/Partner Strategy	Mar-19	EG	WBC highways
Transport	Local Road Network	Warrington South Strategic Infrastructure (Garden Suburb Strategic Link)	South Warrington	MD2	£93,000,000		£93,000,000	Other	WBC	Homes England, developers	Concept only.		>		Identified in Council/Partner Strategy	Mar-19	EG	WBC highways
Transport	Local Road Network	Warrington South Strategic Infrastructure (Garden Suburb Strategic Link) ph 2	South Warrington	INF1, MD2	£130,000,000		£130,000,000	WBC and developers	WBC	Developers/ private sector			>		Identified in Council/Partner Strategy	Mar-19	EG	WBC highways
Transport	Local Road Network	Peel Hall Farm Access Strategy	North Warrington	MD4	£27,870,000			Developer	Developer	Developers / private sector	Included in Local Plan Viability Assessment as Straegic Infrastructure costs.		>		Identified in Council/Partner Strategy	Mar-19	EG	WBC highways
Transport	Local Road Network	South West Urban Extension	South Warrington	MD3	£30,502,000			Developer	Developer	Developers / private sector	Included in Local Plan Viability Assessment as Straegic Infrastructure costs. Includes £3k per dwelling strategic utilities and services cost.		>		Identified in Council/Partner Strategy	Mar-19	EG	WBC highways
Transport	Local Road Network	Waterfront	Central/ Inner Warrington	MD2	£29,829,000			Developer	Developer	Developers / private sector	Included in Local Plan Viability Assessment as Straegic Infrastructure costs.		>		Identified in Council/Partner Strategy	Mar-19	EG	WBC highways
Transport	Local Road Network	Bridfoot link and Brian Bevan island	Central/ Inner Warrington	INF2	£7,200,000		£7,200,000	DIT and WBC	WBC	Developers / private sector	Concept only. LTP4		>		Identified in Council/Partner Strategy	Mar-19	EG	WBC highways
Transport	Local Road Network	High Level cantilever bridge crossing replacement	Inner Warrington/ South Warrington	INF2	£55,000,000		£55,000,000		WBC	Developers / private sector	Concept only. LTP4		>		Identified in Council/Partner Strategy	Mar-19	EG	WBC highways
Transport	Local Road Network	Southern Gateway Development Access Framework	Inner Warrington	INF1	TBC				WBC		Concept only. LTP4		>		Identified in Council/Partner Strategy	Mar-19	EG	WBC highways
Transport	Local Road Network	Warrington North Pinchpoints (A49 corridor)	Inner Warrington/ North Warrington	INF1	TBC				WBC		Concept only. LTP4		>		Identified in Council/Partner Strategy	Mar-19	EG	WBC highways
Transport	Local Road Network	Stadium Quarter Highway Improvement Package (Warrington Transport Improvements Package)	Town Centre	TC1	TBC				WBC		Concept only. LTP4		>		Identified in Council/Partner Strategy	Mar-19	EG	WBC highways
Transport	Local Road Network	Town Centre Vision Access Package (Last Mile)	Various	INF1	TBC				WBC		Concept only. LTP4		>		Identified in Council/Partner Strategy	Mar-19	EG	WBC highways
Transport	Local Road Network	Port Warrington	West Warrington	MD1	TBC				Private Sector		Concept only. LTP4		>		Identified in Council/Partner Strategy	Mar-19	EG	WBC highways
Transport	Public Transport	Warrington West rail station	West Warrington	INF1	TBC			WBC and Local Growth Fund (LGF)	WBC	Cheshire and Warrington LEP	Under construction, completion expected late 2019.	>			Committed	Mar-19	EG	WBC highways
Transport	Public Transport	Warrington Bank Quay station	Town Centre	INF1	£50,000,000		£50,000,000	DIT and WBC	WBC	Network Rail	Depends on HS2 and Northern Powerhouse Rail. LTP4		>		Identified in Council/Partner Strategy	Mar-19	EG	WBC highways
Transport	Public Transport	HS2/NPR interchange	Town Centre	INF1	TBC		TBC	DIT and WBC	WBC	Network Rail			>		Identified in Council/Partner Strategy	Mar-19	EG	WBC highways

CATEGORY	TOPIC	PROJECT	WHERE [PLACE MAKING AREA]	INDICATIVE COST	INDICATIVE COST	FUNDING CONFIRMED	FUNDING GAP	FUNDING SOURCE	WHO [LEAD]	PARTNERS	DELIVERY NOTES	Short Term (2017-2022)	Medium Term (2023-2028)	Long Term (2028-2038)	COMMITTED UNCERTAIN LONG TERM / ASPIRATIONAL	ADDED / UPDATED	AMENDED BY	INFORMATION SOURCE
Transport	Public Transport	CLC station and service enhancement and P&R (electrification on Cheshire Lines route)	Various	INF1	£486,000,000		£486,000,000	DfT and WBC	WBC	Network Rail			>		Identified in Council/Partner Strategy	Mar-19	EG	WBC highways
Transport	Public Transport	Mass Transit Network	Various	LTP4	£300,000,000		£300,000,000	DfT and WBC	WBC	Developers / private sector	Several routes identified in LTP4, detailed study work to follow.		>		Identified in Council/Partner Strategy	Mar-19	EG	WBC highways
Transport	Public Transport	Bus corridor improvements	Various	INF1	£25,000,000		£25,000,000	DfT and WBC	WBC	Developers, private sector		>			Identified in Council/Partner Strategy	Mar-19	EG	WBC highways
Transport	Public Transport	Birchwood station access strategy including P&R	East Warrington	INF1	£37,000,000		£37,000,000	DfT and WBC	WBC	Developers, private sector			>		Identified in Council/Partner Strategy	Mar-19	EG	WBC highways
Transport	Cycling and Walking	Strategic Cycling Route 1 Chester Road to Town Centre	Various	INF1	£1,500,000		£1,500,000	WBC and Local Growth Fund (LGF)	WBC	Cheshire and Warrington LEP	Included in the Local Cycling and Walking Infrastructure Plans within Draft LTP4 (LCWIP)	>			Identified in Council/Partner Strategy	Mar-19	EG	WBC highways
Transport	Cycling and Walking	Strategic Cycling Route 2 Liverpool Road to Town Centre	Various	INF1	£4,000,000		£4,000,000		WBC		Included in the Local Cycling and Walking Infrastructure Plans within Draft LTP4 (LCWIP)	>			Identified in Council/Partner Strategy	Mar-19	EG	WBC highways
Transport	Cycling and Walking	Strategic Cycling Route 3 Knutsford Road to Town Centre	Various	INF1	£3,000,000		£3,000,000		WBC		Included in the Local Cycling and Walking Infrastructure Plans within Draft LTP4 (LCWIP)		>		Identified in Council/Partner Strategy	Mar-19	EG	WBC highways
Transport	Cycling and Walking	Strategic Cycling Route 4 Bewsey Road to Town Centre	Various	INF1	£1,000,000		£1,000,000		WBC		Included in the Local Cycling and Walking Infrastructure Plans within Draft LTP4 (LCWIP)	>			Identified in Council/Partner Strategy	Mar-19	EG	WBC highways
Transport	Cycling and Walking	Strategic Cycling Route 5 Winwick Road to Town Centre	Various	INF1	£3,000,000		£3,000,000		WBC		Included in the Local Cycling and Walking Infrastructure Plans within Draft LTP4 (LCWIP)		>		Identified in Council/Partner Strategy	Mar-19	EG	WBC highways
Transport	Cycling and Walking	Strategic Cycling Route 6 Manchester Road to Town Centre	Various	INF1	£3,000,000		£3,000,000		WBC		Included in the Local Cycling and Walking Infrastructure Plans within Draft LTP4 (LCWIP)		>		Identified in Council/Partner Strategy	Mar-19	EG	WBC highways
Transport	Cycling and Walking	Strategic Cycling Route 7 Wilderspool Causeway to Town Centre	Various	INF1	£3,000,000		£3,000,000		WBC		Included in the Local Cycling and Walking Infrastructure Plans within Draft LTP4 (LCWIP)		>		Identified in Council/Partner Strategy	Mar-19	EG	WBC highways
Transport	Cycling and Walking	Strategic greenways within Warrington Garden Suburb	South Warrington	MD2	£21,000,000		£21,000,000		Private Sector	Developers, private sector	Included in the Local Cycling and Walking Infrastructure Plans within Draft LTP4 (LCWIP)		>	>	Identified in Council/Partner Strategy	Mar-19	EG	WBC highways
Transport	Cycling and Walking	Strategic greenways within Warrington Waterfront	Inner Warrington	MD1	£5,000,000		£5,000,000		WBC	Developers, private sector	Included in the Local Cycling and Walking Infrastructure Plans within Draft LTP4 (LCWIP)		>	>	Identified in Council/Partner Strategy	Mar-19	EG	WBC highways
Transport	Cycling and Walking	GO Dutch neighbourhood treatment	Various	INF1	£20,000,000		£20,000,000		WBC	Developers, private sector	LTP4	>	>	>	Identified in Council/Partner Strategy	Mar-19	EG	WBC highways
Transport	Cycling and Walking	Strategic greenways extensions/upgrades	Various	INF1, DC3	£10,000,000		£10,000,000		WBC		LTP4	>	>	>	Identified in Council/Partner Strategy	Mar-19	EG	WBC highways
Transport	Cycling and Walking	River Mersey Footbridge (Waterfront) New footbridge to improve access for cycling and pedestrians	Town Centre	TC1	£2,000,000		£2,000,000		WBC	Developers, private sector	Included in the Local Cycling and Walking Infrastructure Plans within Draft LTP4 (LCWIP)		>		Identified in Council/Partner Strategy	Mar-19	EG	WBC highways
Transport	Cycling and Walking	Riverside (North of Mersey) Access improvements for cycling and pedestrians, including new walkways	Town Centre/ Inner Warrington	TC1	£2,500,000		£2,500,000		WBC	Developers, private sector	LTP4		>		Identified in Council/Partner Strategy	Mar-19	EG	WBC highways
Transport	Asset Management	Asset Management of Structures Essential investment to tackle deterioration of structures (bridges, retaining walls, etc.)	Borough wide	INF1	TBC	TBC	TBC	WBC and DfT	WBC	Highways England, Network Rail, private sector.	In addition to providing for current needs, investment will need to be prioritised where changes in traffic type and volume will impact on levels of deterioration - for example increased freight movements will have implications for the load bearing capacity of weak bridges.	>	>	>	Identified in Council/Partner Strategy	Mar-19	EG	WBC Highways
Transport	Asset Management	Highways Structural Improvement and Asset Management Schemes (0-15yrs) Essential investment to tackle deterioration of the highway network. Priorities identified in network condition survey drawings.	Borough wide	INF1	TBC	TBC	TBC	WBC and DfT	WBC		Various individual schemes between £50-£350k currently progressed each year. Current LTP budget allocations insufficient to prevent on-going network deterioration. [Source of figures: Depreciation Values taken from MARCH pms Report March 2018 - Annual Depreciation - Carriageways, Yotta DCL]	>	>	>	Identified in Council/Partner Strategy	Mar-19	EG	WBC Highways
Transport	Asset Management	Street Lighting Programme of investment to ensure appropriate levels and environmental efficiency of street lighting.	Borough wide	INF1	£16,000,000		£16,000,000	WBC	WBC		The Completion of the Street Lighting Capital Replacement Project of approximately 18,000 Units over a core investment period will be completed by 2020/21. It is planned to refresh the lantern technology in future years following the completion of the project.	>	>	>	Identified in Council/Partner Strategy	Mar-19	EG	WBC Highways
Utilities	Electricity	Network Re-inforcement Provision of new substation at Antrim Road to reinforce network in Winwick Road corridor.	Town Centre, Inner Warrington, North Warrington	INF3	TBC	TBC	TBC	Private investment	Scottish Power Energy Networks		Lawful development certificate granted and land tenant given notice to quit.	>			Committed	Mar-19	EG	Scottish Power

CATEGORY	TOPIC	PROJECT	WHERE [PLACE MAKING AREA]	INDICATIVE COST	INDICATIVE COST	FUNDING CONFIRMED	FUNDING GAP	FUNDING SOURCE	WHO [LEAD]	PARTNERS	DELIVERY NOTES	Short Term (2017-2022)	Medium Term (2023-2028)	Long Term (2028-2038)	COMMITTED UNCERTAIN LONG TERM / ASPIRATIONAL	ADDED / UPDATED	AMENDED BY	INFORMATION SOURCE
Utilities	Electricity	Town Centre Network Re-inforcement Provision of new infrastructure/capacity in the Town Centre.	Town Centre	INF3, TC1	£26,000,000	0	£26,000,000	Subject of HIF Bid	WBC	Scottish Power Energy Networks	Early stage feasibility costs.		>		Identified in Council/Partner Strategy	Mar-19	EG	Scottish Power/ WBC Infrastructure
Utilities	Electricity	North Warrington network upgrades Removal of existing substation and provision of a new upgraded substation at Waterworks Lane, Winwick to reinforce network in North Warrington.	North Warrington	INF3	TBC	TBC	TBC	Private investment	Scottish Power Energy Networks		Planning permission granted.	>			Committed	Mar-19	EG	Scottish Power
Utilities	Electricity	Omega Upgrades New substation to support the development of Omega.	West Warrington	INF3	TBC	TBC	TBC	Private investment	Developer	Scottish Power Energy Networks	Planning permission granted.	>			Committed	Mar-19	EG	Scottish Power
Utilities	Renewable Energy	Large scale renewable technology and district heating schemes To be developed across the borough initiated in the Strategic Locations and Opportunity Areas	Borough wide	ENV7	Not yet identified	£0	Not yet identified	Not yet identified	WBC	Private Sector	The long term ambition is to deliver a strategic district heating network across the borough. The Council recognises that the opportunities for installing such a network across existing communities is, for the most part, beyond the scope of planning. Therefore, Policy QE1 requires development to be able to connect to a scheme once such a network is in place and to be designed to be compatible with future networks, in terms of site layout, heating and site-wide infrastructure design. The policy requires larger more strategic new developments to install their own network, which can later be connected up to a larger network. In order to minimise costs the Council will undertake further, more detailed work to assess the feasibility of opportunities for decentralised energy networks in the strategic locations and opportunity areas identified in the strategic policies and on the key diagram.			>	Longer term / aspirational	Mar-19	EG	WBC
Utilities	Telecommunications	Connecting Cheshire Project Provide superfast broadband to areas of Warrington in which there is no provision or future plans for this by the private sector	Borough wide	INF3	£28,500,000	£28,500,000	£0	BDUK Programme, EDRF grant funding, BT, Connecting Cheshire Partnership	WBC, Cheshire Authorities, Halton BC	BT	Partnership with Cheshire East, Cheshire West & Chester and Halton Councils to initiate a project to attract UK Govt. Funding awarded from BDUK Programme (£4m) and EDRF (£13.6m), with contributions from BT (£9m) and Connecting Cheshire Partnership (£1.25m). Cost reflects full project for all	>			Committed	Mar-19	EG	Connecting Cheshire
Utilities	Water Supply	Improvements to Trunk Main Further improvements to the trunk main which supplies west and east Warrington	Inner Warrington, West Warrington, East Warrington	INF3	TBC	TBC	TBC	AMP6	United Utilities		On-going project, due for delivery in AMP6 (by 31 March 2020). This is being re-modelled currently, due to lots of changes to Warrington's water network configuration as part of the work during the dry weather contingency plans (Summer/Autumn 2018). So the solution needs re-modelling. Anticipated completion still by 31 March 2020.	>			Identified in Council/Partner Strategy	Mar-19	EG	United Utilities
Utilities	Water Supply	Improvements to Waste Water Treatment Works To deliver cleaner rivers, streams and coastal bathing waters	Borough wide	INF3	£8,000,000	£8,000,000	£0	AMP5	United Utilities		Aim of project is to improve river water quality. Where possible asset optimisation of United Utilities PLC assets will be undertaken to deliver the project's objectives.	>			Committed	Mar-19	EG	United Utilities
Utilities	Water Supply	Network Reinforcement Reinforce network into central Warrington with focus on the Manchester Ship Canal	Town Centre, Inner Warrington, South Warrington	INF3	TBC	TBC	TBC	AMP6	United Utilities			>	>		Identified in Council/Partner Strategy	Mar-19	EG	United Utilities
Utilities	Health	Expansion of Fearnhead and Padgate GP Practices	Inner and North Warrington	INF4	£1M	No	TBC	ETTF (NHSE) NHSE premises improvement	CCG/NHSE	NHS England NHSPS	Both schemes being developed by the practices. Exact requirements to be determined based on the outcome of the Peel Hall, Sankey Hub, and Omega developments	>	>		Identified in Council/Partner Strategy	Mar-19	MB	Via the Warrington Strategic Estates Group
Social	Health	New Primary Health Facility at Omega Local Centre	West Warrington	INF4	£1.5M	No	TBC	NHSPS Customer Capital route, or other NHSE funding	CCG/NHSE	NHS England CHP/Renova Developments NHSPS	Agreement yet to be reached on whether land will be purchased outright, or whether this will be passed to a 3rd party and a lease arrangement entered into	>			Identified in Council/Partner Strategy	Mar-19	MB	Via the Warrington Strategic Estates Group
Social	Health	New Primary Health Facility at Appleton Cross	South Warrington	INF4	£1M	£789,504	£210,496	ETTF (NHSE) NHSPS Customer Capital or NHSE funding source	CCG/NHSE	NHS England CHP/Renova Developments NHSPS	Development part of wider neighbourhood plan and to meet the increased demand in the area resulting from housing developments	>	>		Identified in Council/Partner Strategy	Mar-19	MB	Via the Warrington Strategic Estates Group
Social	Health	Waterfront - New Health Facility	Inner Warrington	MD1, INF4	TBC				CCG/NHSE				>		Identified in Council/Partner Strategy	Mar-19	EG	CCG/NHSE, Draft Local Plan
Social	Health	South West Extension - New Health Facility	South Warrington	MD3, INF4	TBC				CCG/NHSE				>		Identified in Council/Partner Strategy	Mar-19	EG	CCG/NHSE, Draft Local Plan
Social	Health	Garden Suburb - New Health Facility	South Warrington	MD2, INF4	TBC				CCG/NHSE		To be included in the neighbourhood hub/community facilities.		>		Identified in Council/Partner Strategy	Mar-19	EG	CCG/NHSE, Draft Local Plan
Social	Health	New Primary Health Care Facility - Lymm (Rushgreen Road / Tanyard Farm)	South Warrington	OS7, INF4	TBC				CCG/NHSE				>		Identified in Council/Partner Strategy	Mar-19	EG	CCG/NHSE, Draft Local Plan
Social	Health	Cockhedge Medical Centre	Town Centre	INF4	TBC						Expansion needed to accommodate projected growth.	>	>		Identified in Council/Partner Strategy	Mar-19	EG	CCG/NHSE

CATEGORY	TOPIC	PROJECT	WHERE [PLACE MAKING AREA]	INDICATIVE COST	INDICATIVE COST	FUNDING CONFIRMED	FUNDING GAP	FUNDING SOURCE	WHO [LEAD]	PARTNERS	DELIVERY NOTES	Short Term (2017-2022)	Medium Term (2023-2028)	Long Term (2028-2038)	COMMITTED UNCERTAIN LONG TERM / ASPIRATIONAL	ADDED / UPDATED	AMENDED BY	INFORMATION SOURCE
Social	Health	New Warrington Hospital	TBC	INF4	TBC	TBC	TBC	TBC	WHHFT	TBC	Development of new hospital campus to replace existing Warrington Hospital build.	>	>	>	Longer term / aspirational	Mar-19	EG	NHS