

Warrington Borough Council

**Schedule of amendments to the Policies Map
of the Updated Proposed Submission
Version Local Plan 2021-2038**

March 2023

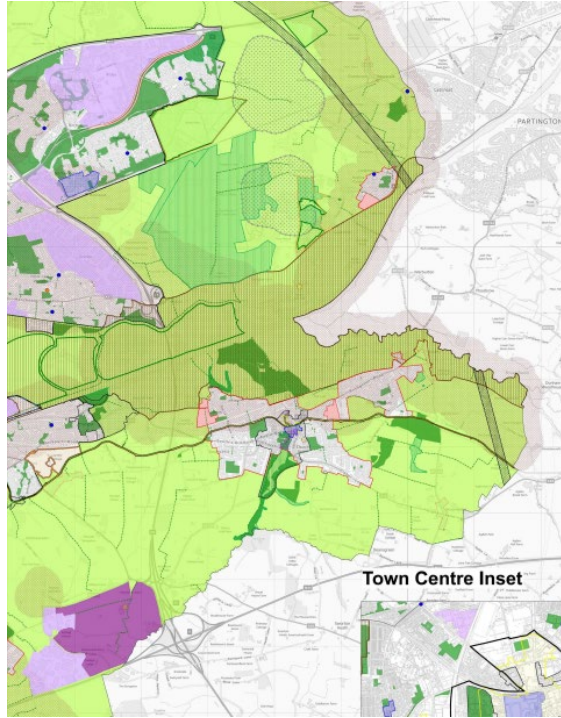


Proposed Amendments (Policies Map)

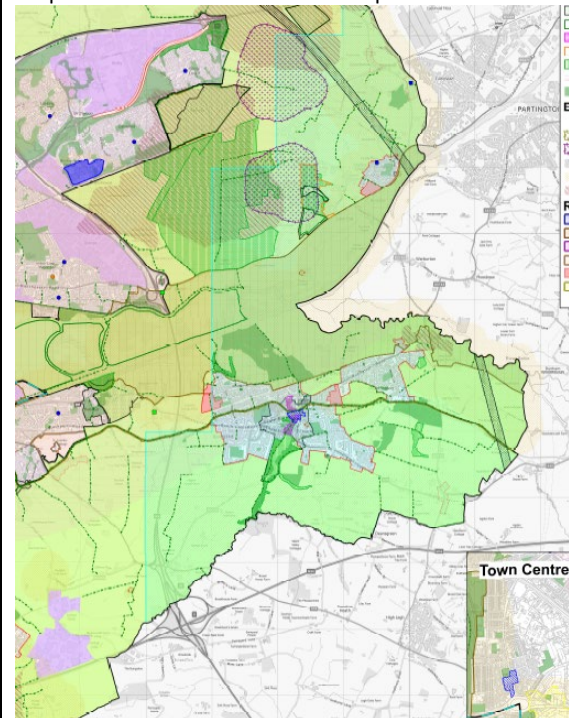
Changes as a result of recommended Main Modifications outlined in Inspectors Document ID08

Modification Ref No.	UPSVLP Policy	Amendment	Reason/Justification
PMM 01	INF6	Add the Manchester Airport Safeguarding Zone referred to in the policy. East of Borough.	Consequential change as a result of proposed modification by Inspector.

UPSVLP Policies Map:

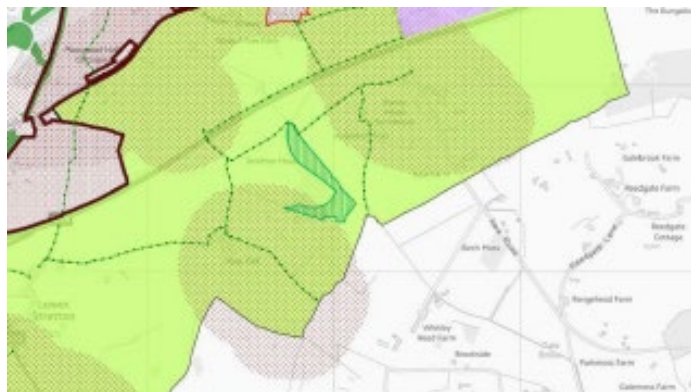
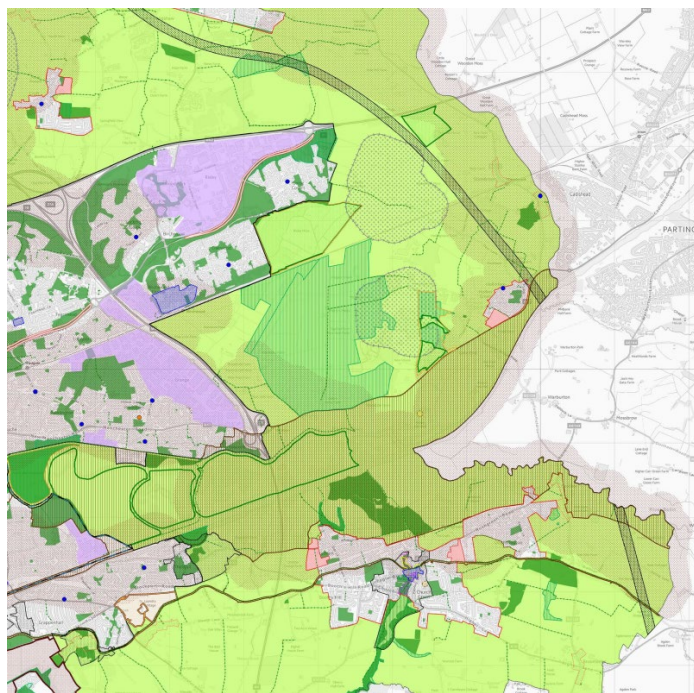
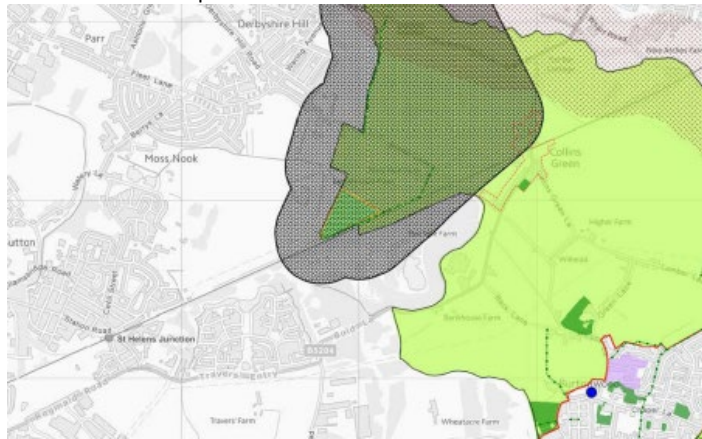


Proposed amendment to Policies Map:

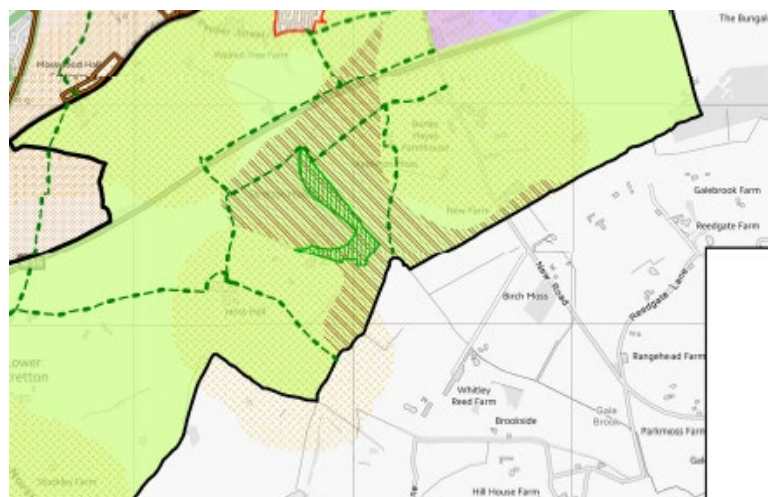
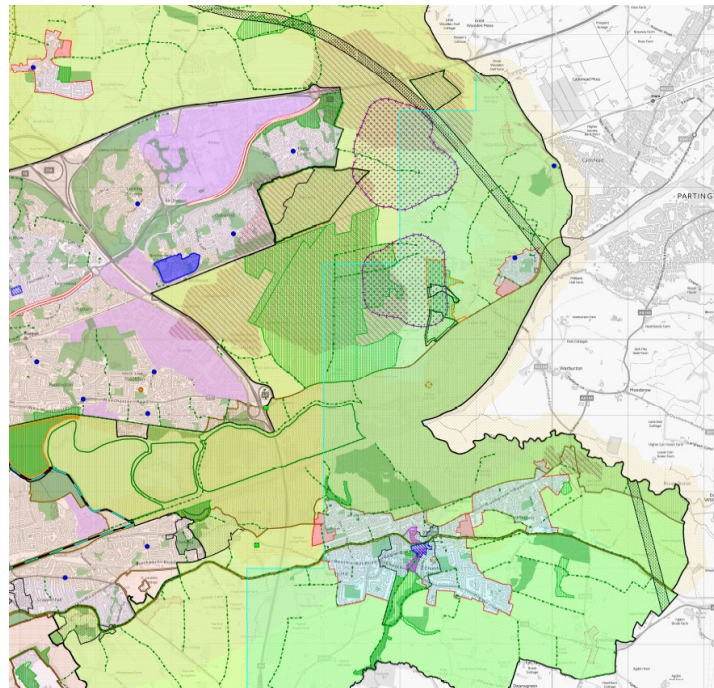
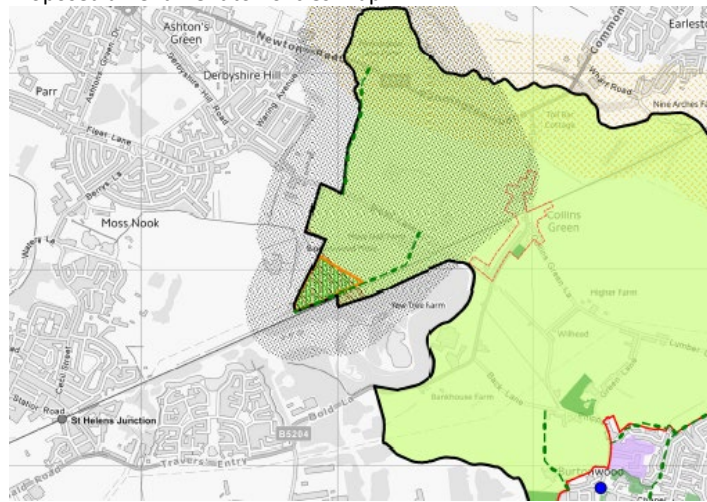


PMM 02	ENV5	Add the extent of the PEAT resource referred to in the policy. Borough wide (five locations).	Consequential change as a result of proposed modification by Inspector.
--------	------	-----------------------------------------------------------------------------------------------	-------------------------------------------------------------------------

UPSVLP Policies Map:

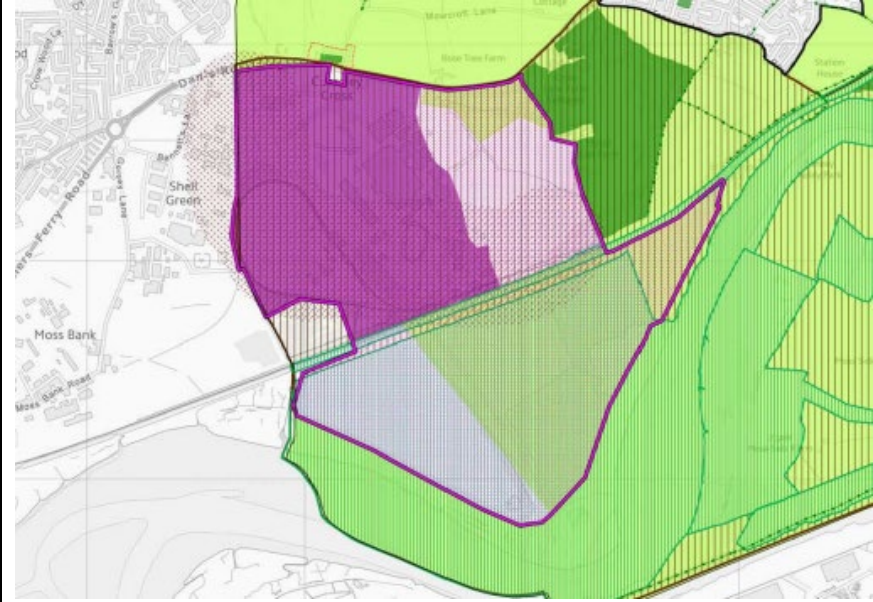


Proposed amendment to Policies Map:

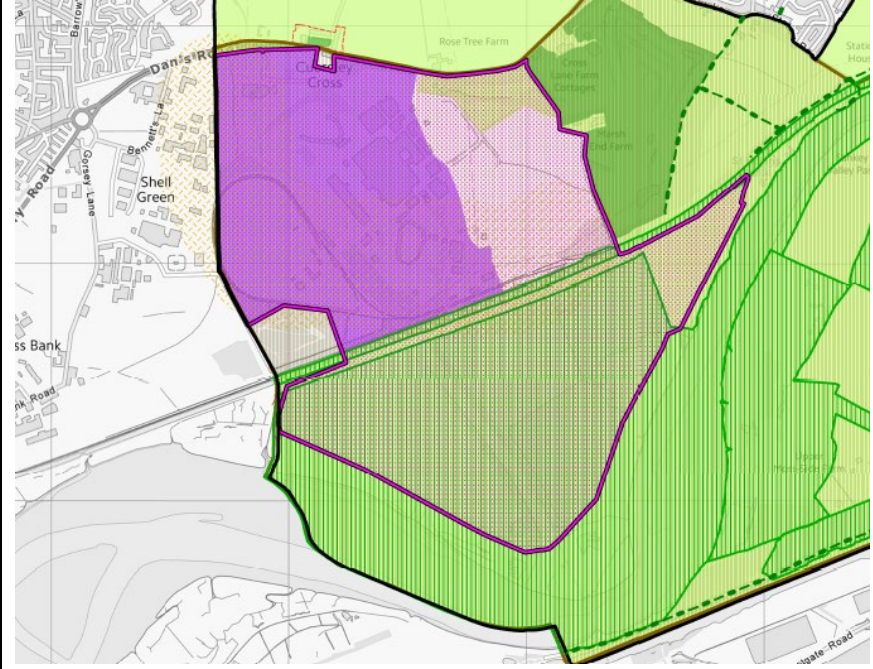


PMM 03	MD3	Amend the Green Belt boundary to retain the southern residential parcel of the proposed allocation, to the south of the railway line, in Green Belt.	Consequential change as a result of proposed modification by Inspector.
--------	-----	------------------------------------------------------------------------------------------------------------------------------------------------------	-------------------------------------------------------------------------

UPSVLP Policies Map:



Proposed amendment to Policies Map:

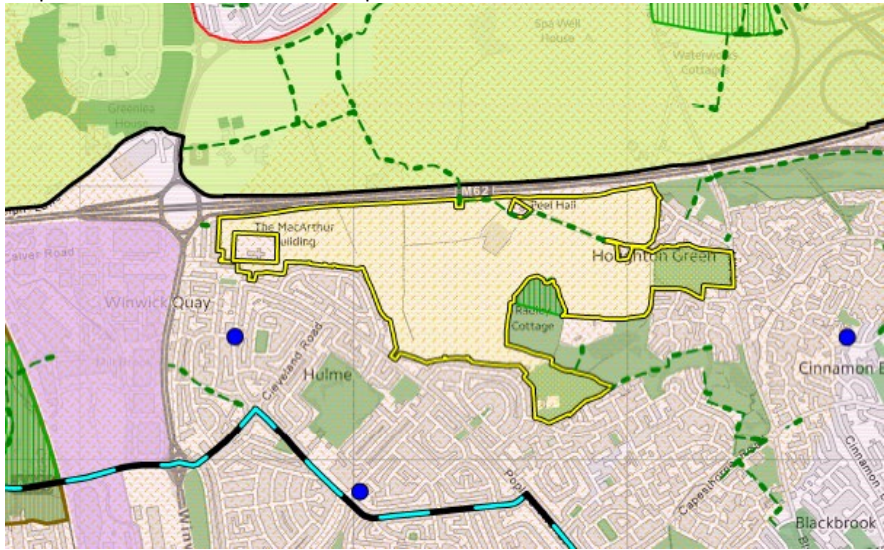


PMM 04	MD4	Amend the site allocation to show the Peel Hall site as a commitment rather than an allocation.	Consequential change as a result of proposed modification by Inspector.
--------	-----	-------------------------------------------------------------------------------------------------	-------------------------------------------------------------------------

UPSVP Policies Map:

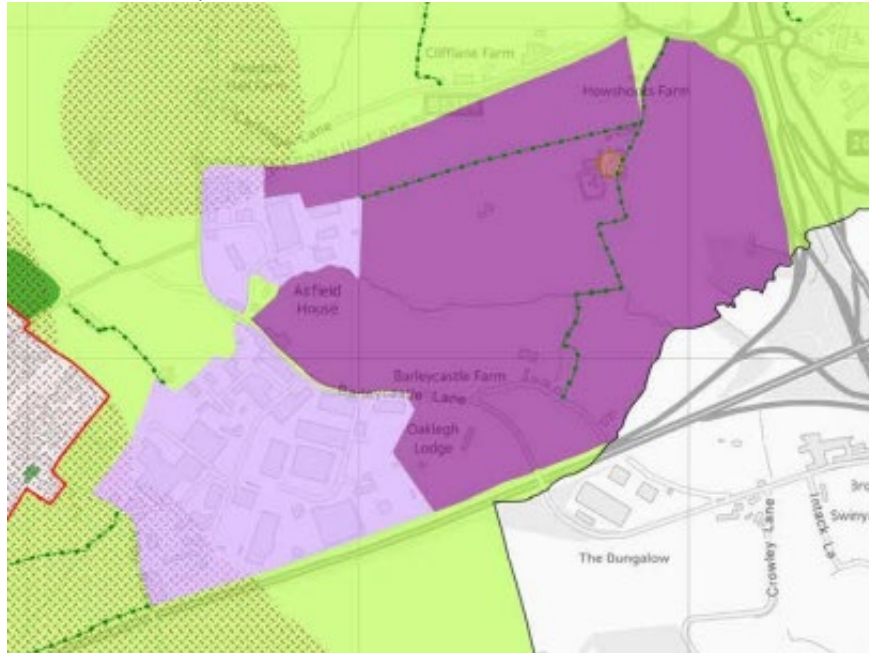


Proposed amendment to Policies Map:

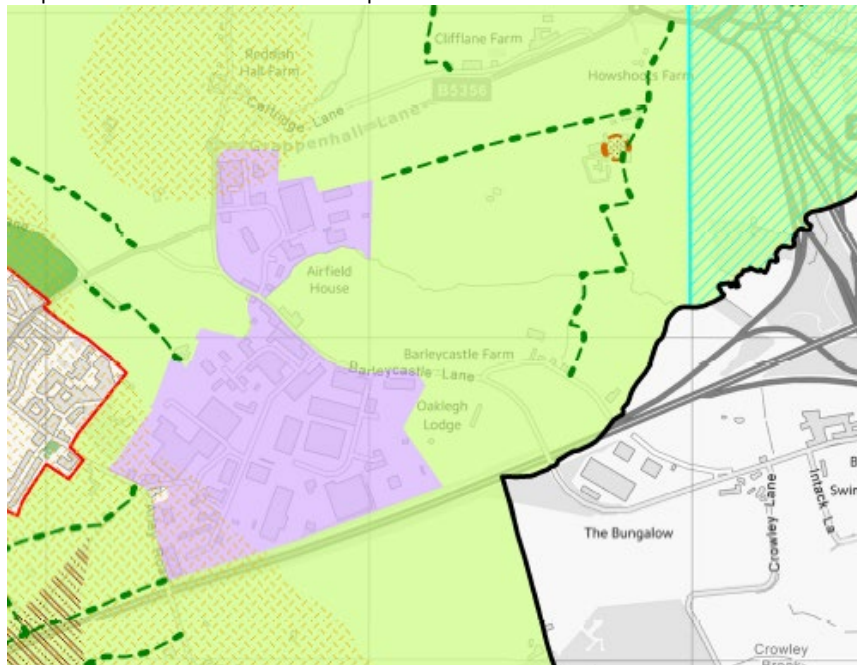


PMM 05	MD6	Delete the proposed employment allocation boundary completely.	Consequential change as a result of proposed modification by Inspector.
PMM 05	MD6	Amend the Green Belt boundary to retain the SEWEA in the Green Belt (consequential change of deleting allocation boundary).	Consequential change as a result of proposed modification by Inspector.

UPSVP Policies Map:

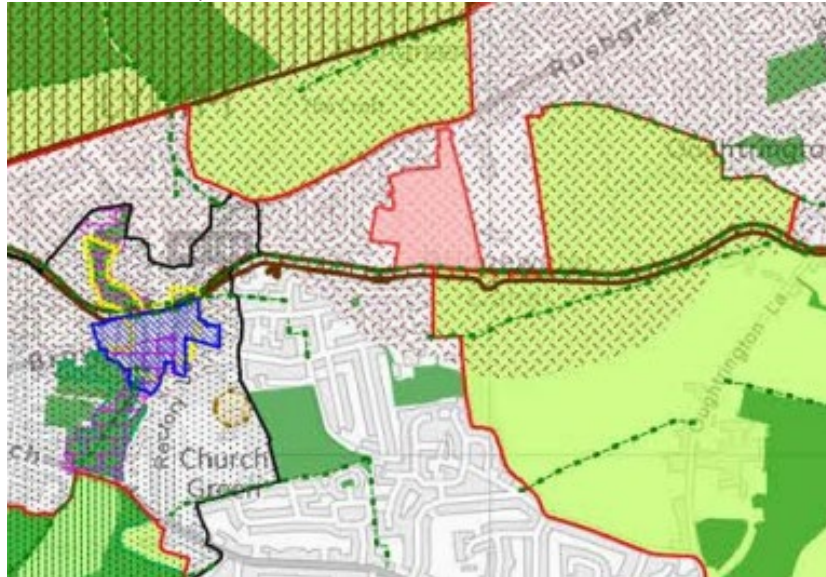


Proposed amendment to Policies Map:

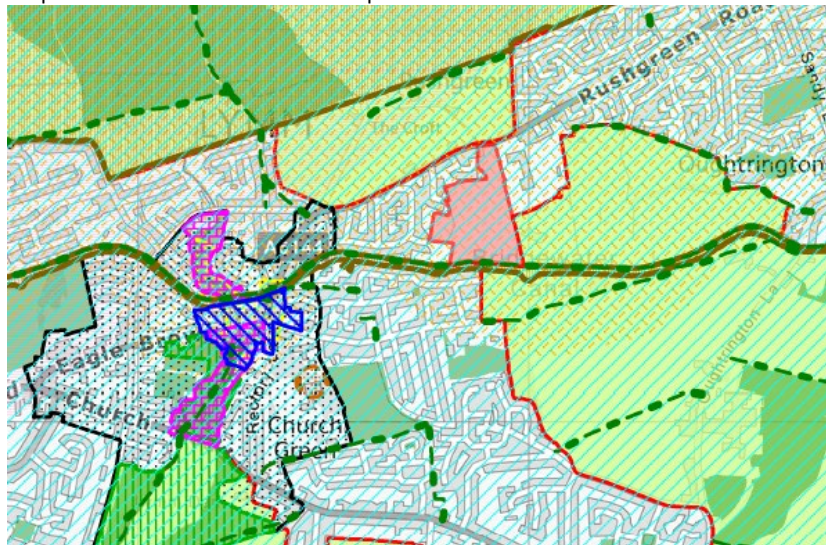


PMM 06	OS5	Retain land to the east of the OS5 allocation boundary in the Green Belt as per plan contained in Council Document CD51 .	Consequential change as a result of proposed modification by Inspector.
PMM 06	OS5	Amend the site allocation and settlement boundaries to reflect the changes contained in Council Document CD51 .	Consequential change as a result of proposed modification by Inspector.

UPSVLP Policies Map:



Proposed amendment to Policies Map:



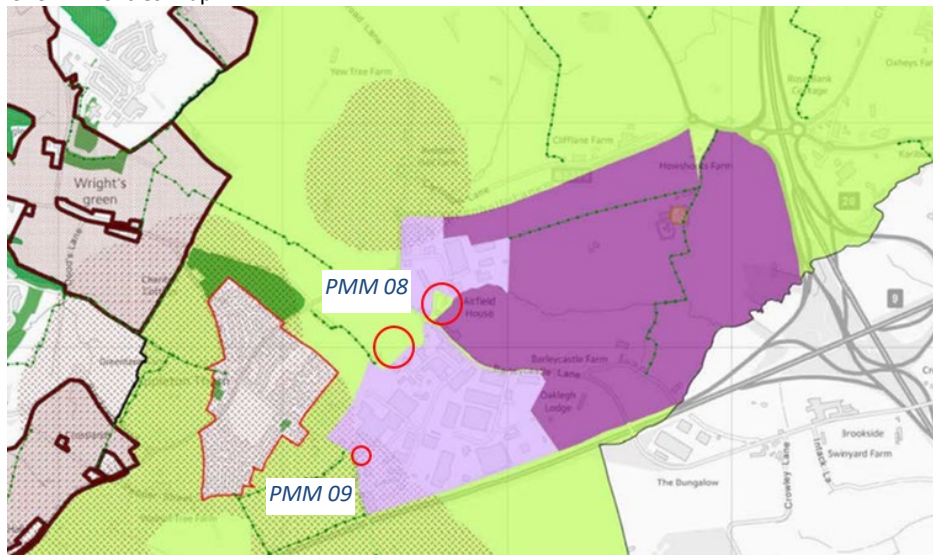
PMM 07	Legend Box	Consequential changes to take account of the above proposed modifications where necessary. (Refer to amended Legend at PMM 28)	Consequential change as a result of proposed modification by Inspector.
--------	---------------	-----------------------------------------------------------------------------------------------------------------------------------	-------------------------------------------------------------------------

Proposed Amendments (Policies Map)

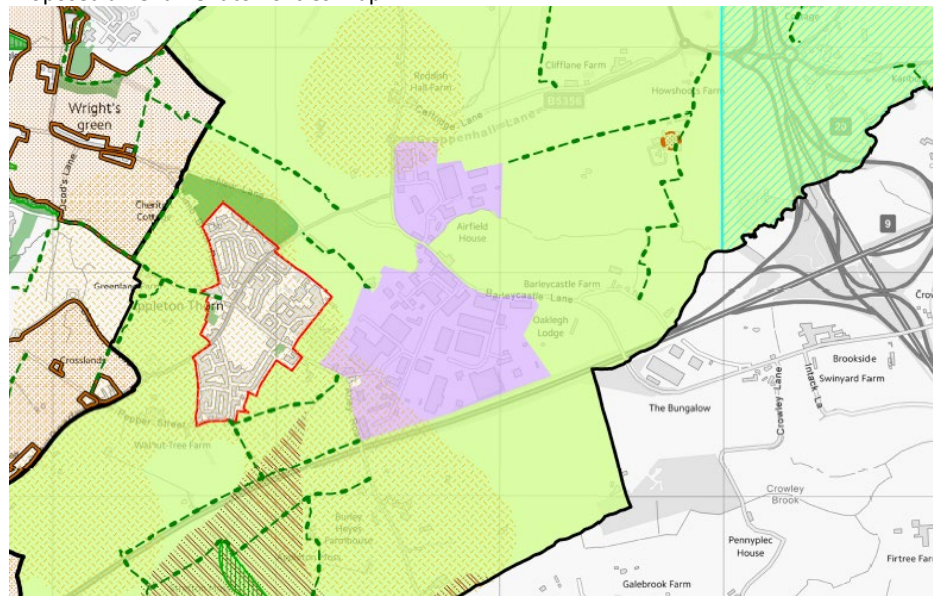
Other proposed changes that are considered to be Main Modifications (that are not outlined in the Inspectors Document ID08)

Modification Ref No	UPSVLP Policy	Amendment	Reason/Justification
Strategic Planning Policies (Objective W1)			
PMM 08	DEV4	Amend existing employment area boundary at Appleton Thorn/Barleycastle Trading Estate to include land to the southwest of Airfield House and land adjacent to Yew Tree Farm/Barn.	To correct a drafting error in the submission version of the Policies Map (Document SP2). To ensure that the employment area boundary is accurate and to match the inset boundary shown in the current adopted local plan.
PMM 09	DEV4	Amend existing employment area boundary at Appleton Thorn/Barleycastle Trading Estate to remove land at nos. 1 & 2 Burley Lane (Old Farm) from the existing employment area allocation.	To correct a drafting error in the submission version of the Policies Map (Document SP2). These two properties have been included in the employment area in error. They will remain within the inset boundary as defined in the adopted local plan but outside of the Green Belt.

UPSVP Policies Map:

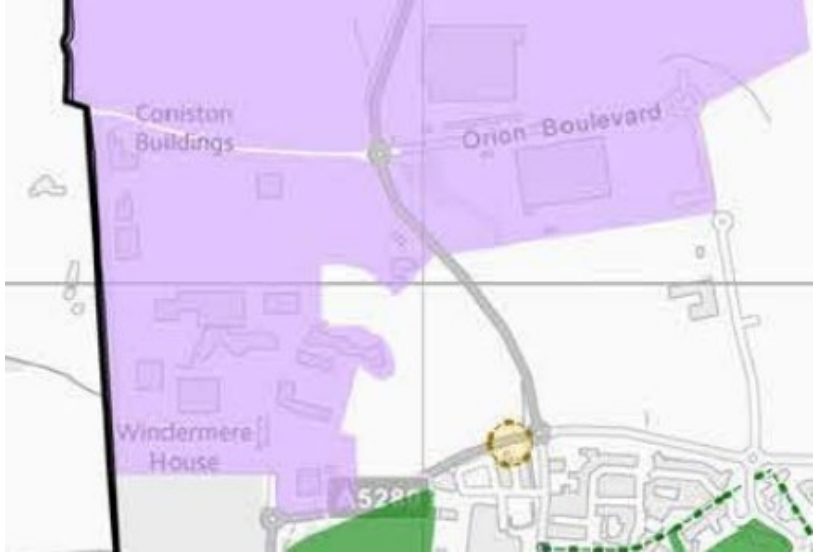


Proposed amendment to Policies Map:

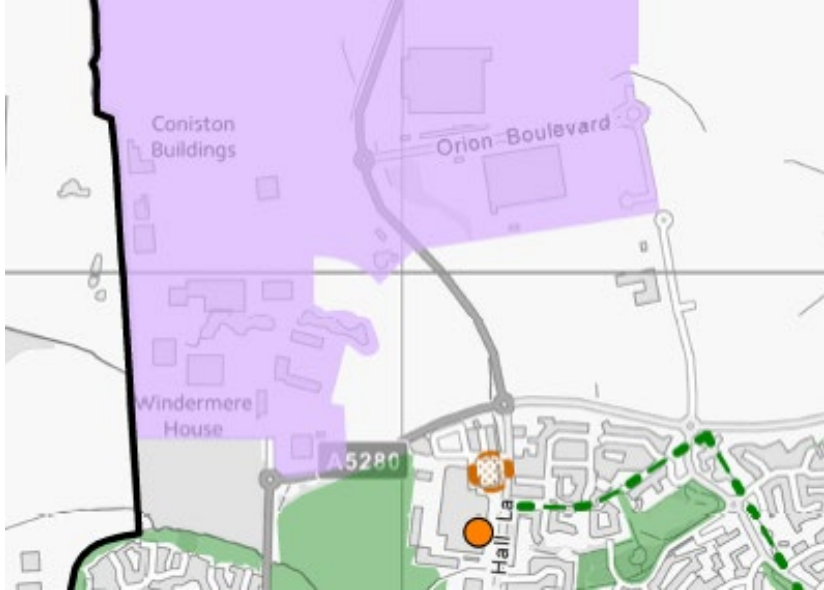


PMM 10	DEV4	Amend existing employment area boundary at Omega/Lingley Mere to include parts of Orion Boulevard and Omega Boulevard.	To correct a drafting error in the submission version of the Policies Map (Document SP2). These are roads that are within the employment area.
--------	------	------------------------------------------------------------------------------------------------------------------------	------------------------------------------------------------------------------------------------------------------------------------------------

PSVLP Policies Map:



Proposed amendment to Policies Map:



PMM 11	DEV4	Amend existing employment area boundary at Omega to accurately reflect extent of Planning Permission for residential development.	To correct a drafting error in the submission version of the Policies Map (Document SP2) so as to accurately reflect the extent of the remaining employment area following the approval of outline planning permission 2019/36241 for further residential development in Phases 4-7, Omega South, further to Omega Warrington Ltd's representation (UPSVLP 0425).
--------	------	-----------------------------------------------------------------------------------------------------------------------------------	-------------------------------------------------------------------------------------------------------------------------------------------------------------------------------------------------------------------------------------------------------------------------------------------------------------------------------------------------------------------

UPSVLP Policies Map:

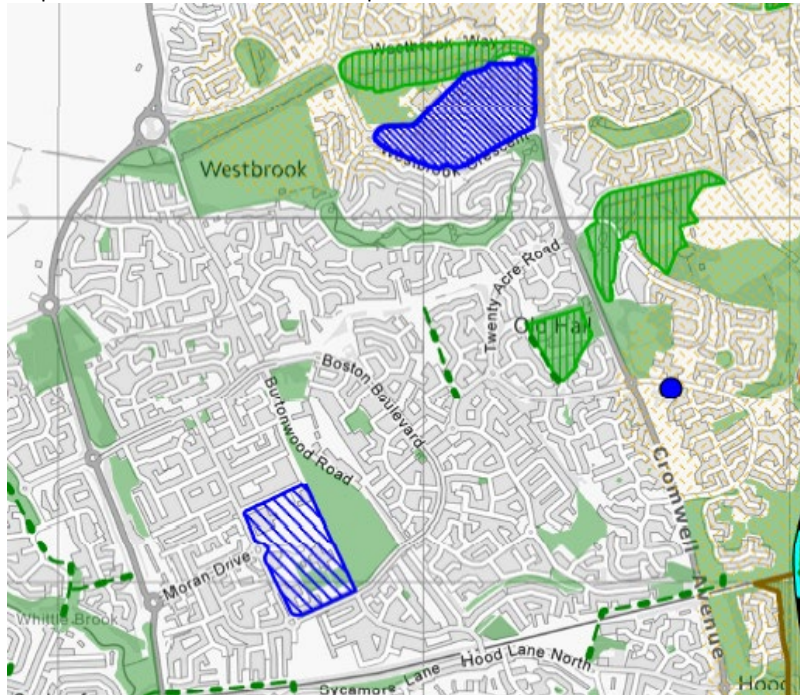
Proposed amendment to Policies Map:

PMM 12	DEV5	Amend the designation to distinguish between District and Neighbourhood Centres and amend legend accordingly.	To make it clear on the Policies Map which centres are District and which are Neighbourhood centres.
--------	------	---------------------------------------------------------------------------------------------------------------	------------------------------------------------------------------------------------------------------

UPSVP Policies Map:



Proposed amendment to Policies Map:



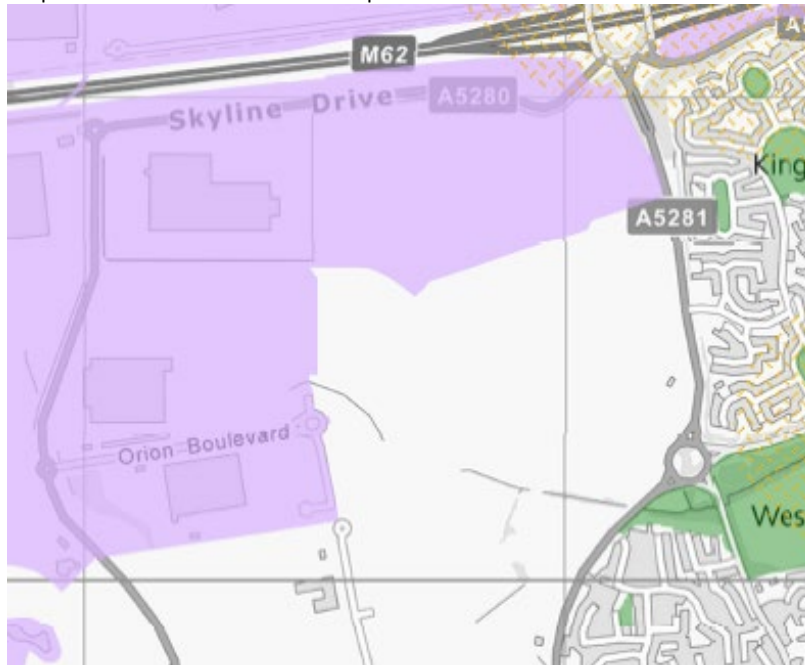
Strategic Planning Policies (Objective W4)

PMM 13	DC2	Remove the Picket-Hamilton Fort Ancient Monument Symbol at Omega.	To reflect the fact that the asset has been relocated as part of the Omega employment development and subsequently downgraded by Historic England to a Grade II Listed structure, as highlighted in Omega Warrington Ltd's representation (UPSVLP 0425).
--------	-----	-------------------------------------------------------------------	----------------------------------------------------------------------------------------------------------------------------------------------------------------------------------------------------------------------------------------------------------

UPSVLP Policies Map:



Proposed amendment to Policies Map:

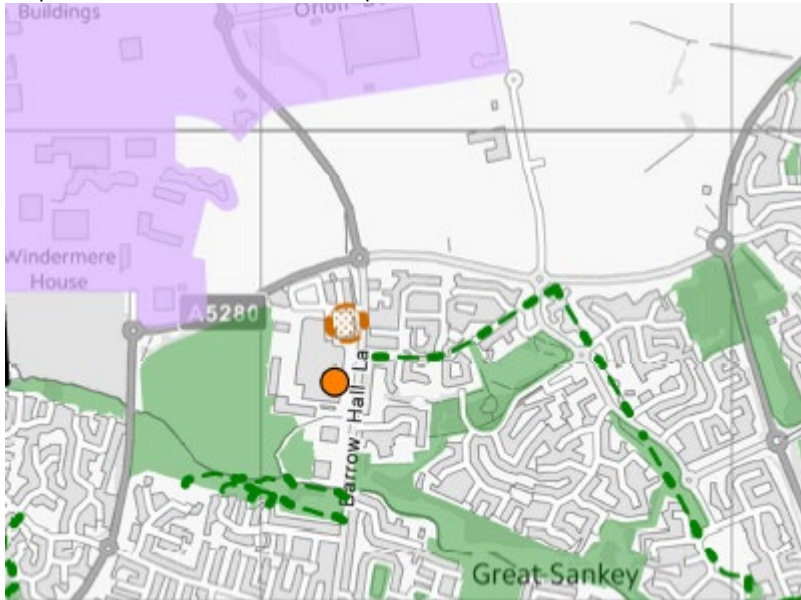


PMM 14	DC2	Reposition the Barrow Old Hall Moated Site Ancient Monument Symbol to the correct location on Barrow Hall Lane.	To correct a drafting error in the submission version of the Policies Map (Document SP2).
--------	-----	-----------------------------------------------------------------------------------------------------------------	-------------------------------------------------------------------------------------------

UPSVP Policies Map:



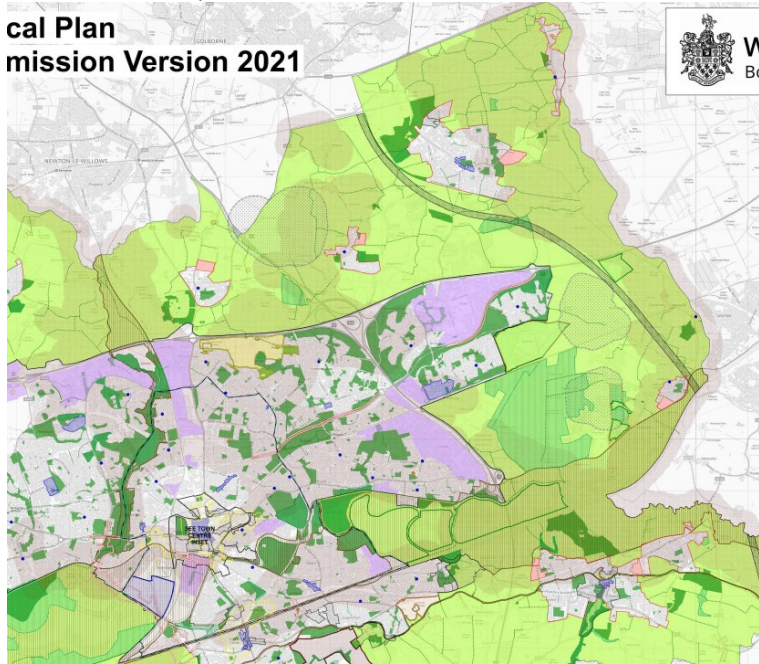
Proposed amendment to Policies Map:



PMM 15	DC3 & DC4	Add the Great Manchester Wetlands Nature Improvement Area referred to in the policy.	To reflect submissions made by, and discussion with, Cheshire Wildlife Trust (UPSVLP 0421).
--------	--------------	--------------------------------------------------------------------------------------	---------------------------------------------------------------------------------------------

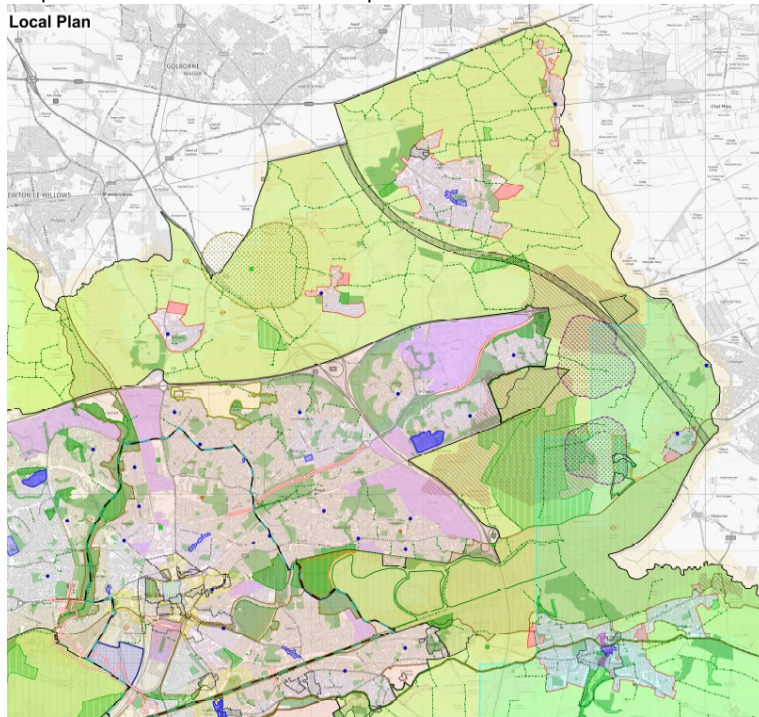
UPSVLP Policies Map:

**Local Plan
mission Version 2021**



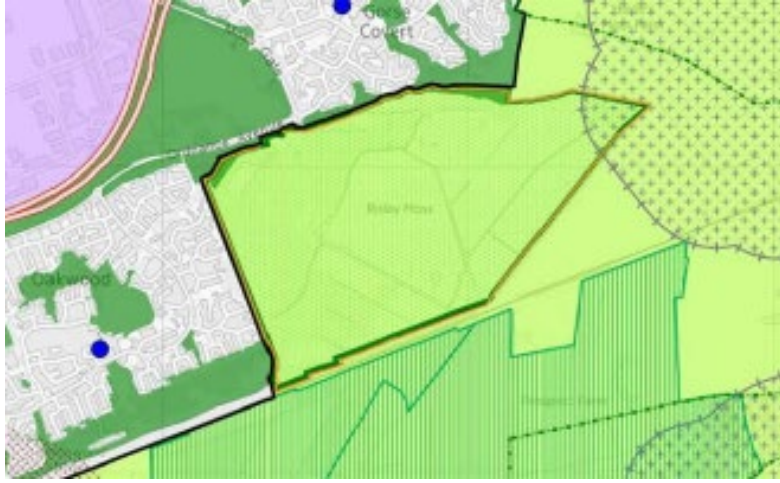
Proposed amendment to Policies Map:

Local Plan

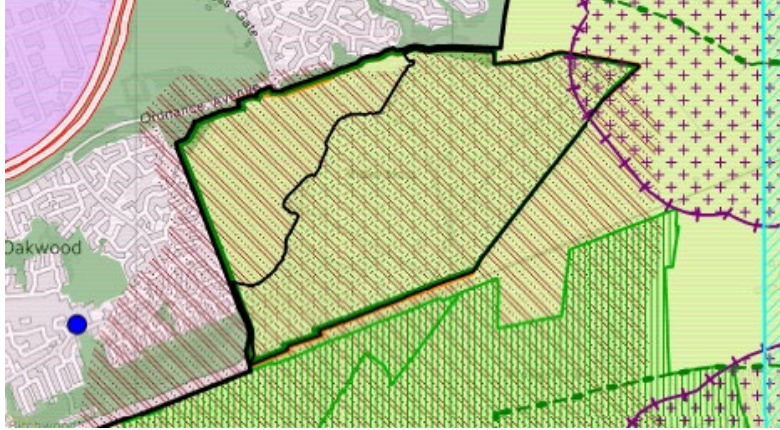


PMM 16	DC4	Amend the Risley Moss SAC boundary to reflect the statutory boundary designation as shown on Defra MAGIC MAP.	To reflect the statutory designation boundary as highlighted in Cheshire Wildlife Trust's representation (UPSVLP 0421).
--------	-----	---------------------------------------------------------------------------------------------------------------	-------------------------------------------------------------------------------------------------------------------------

UPSVLP Policies Map:



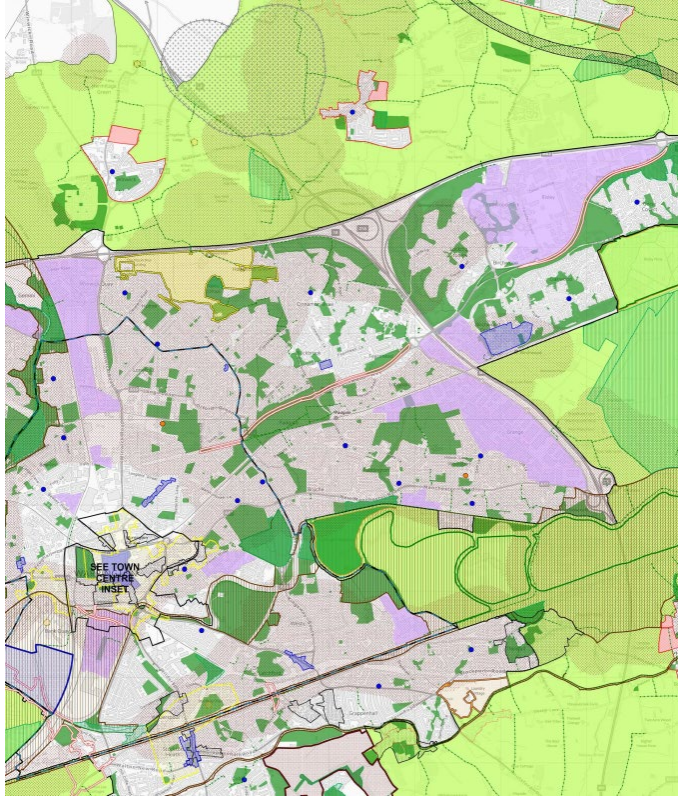
Proposed amendment to Policies Map:



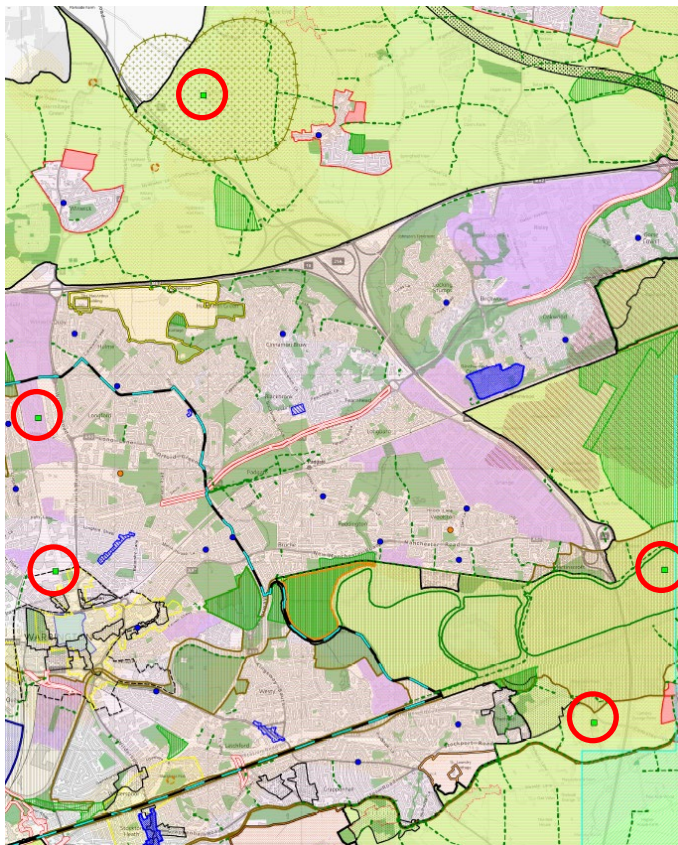
Strategic Planning Policies (Objective W6)

PMM 17	ENV3	Add the existing minerals infrastructure shown in, Fig.15 (page 160) of the UPSVLP 2021 (SP1), on to the Policies Map.	To accurately reflect the policy wording.
--------	------	------------------------------------------------------------------------------------------------------------------------	-------------------------------------------

UPSVLP Policies Map:

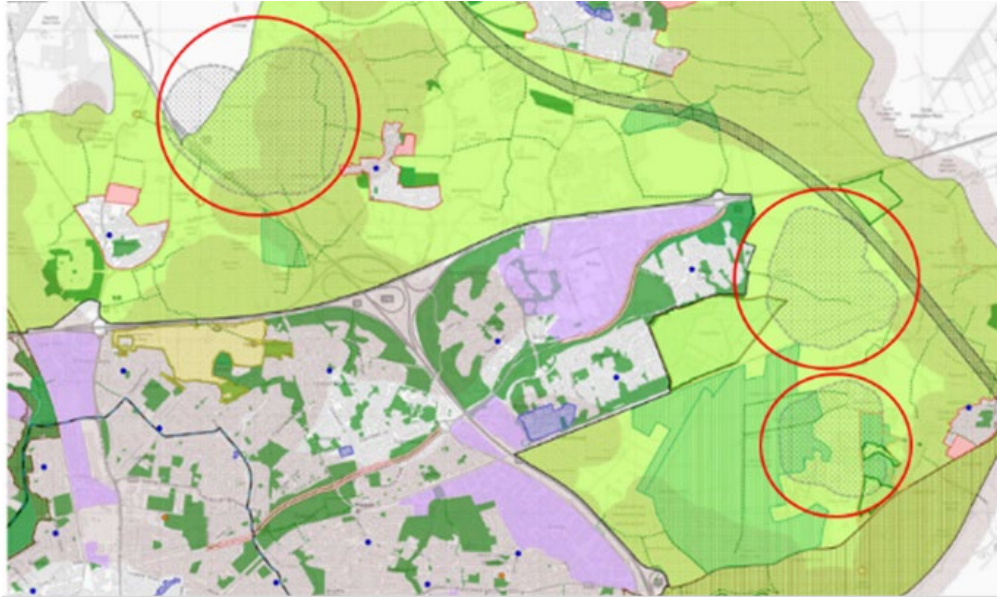


Proposed amendment to Policies Map:

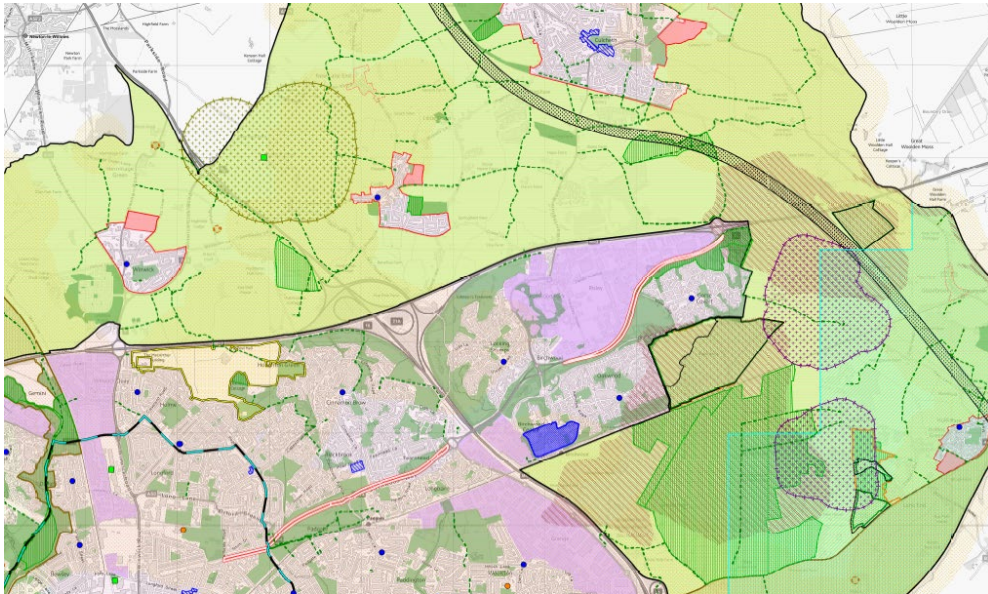


PMM 18	ENV3	Amend the colours of the sandstone quarry and clay pit MSA designations to distinguish between the two, as in Fig 14 (Page 159) of the UPSVLP 2021 (SP1).	To make it clear on the Policies Map which MSA's relate to clay reserves and which relate to sandstone reserves.
--------	------	-----------------------------------------------------------------------------------------------------------------------------------------------------------	------------------------------------------------------------------------------------------------------------------

UPSVLP Policies Map:



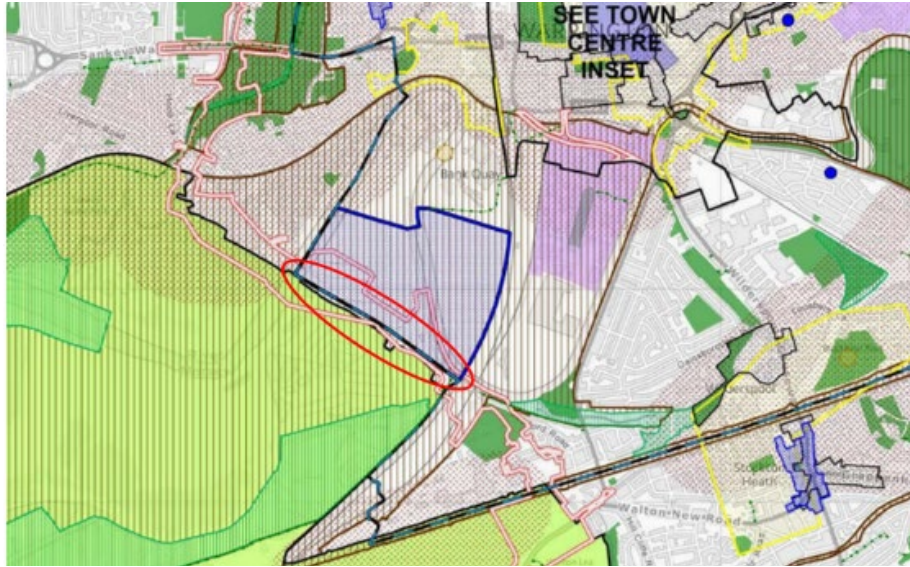
Proposed amendment to Policies Map:



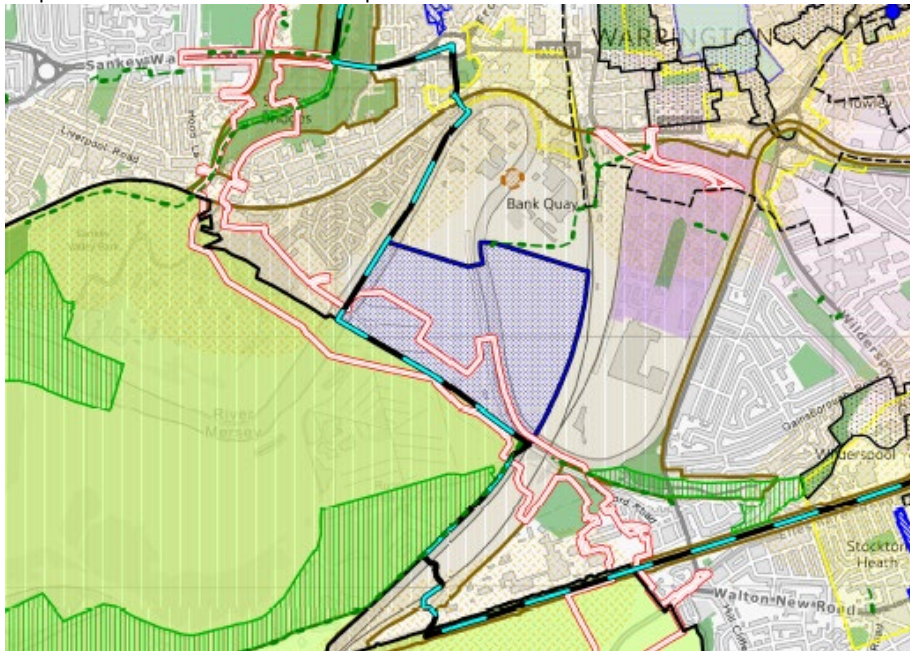
Site Allocations - Main Development Areas (MD1 to MD6)

PMM 19	MD1	Amend Green Belt boundary and settlement boundary to align with the southwestern edge of the Waterfront allocation boundary.	To correct a drafting error in the submission version of the Policies Map (Document SP2).
--------	-----	------------------------------------------------------------------------------------------------------------------------------	-------------------------------------------------------------------------------------------

UPSVLP Policies Map:

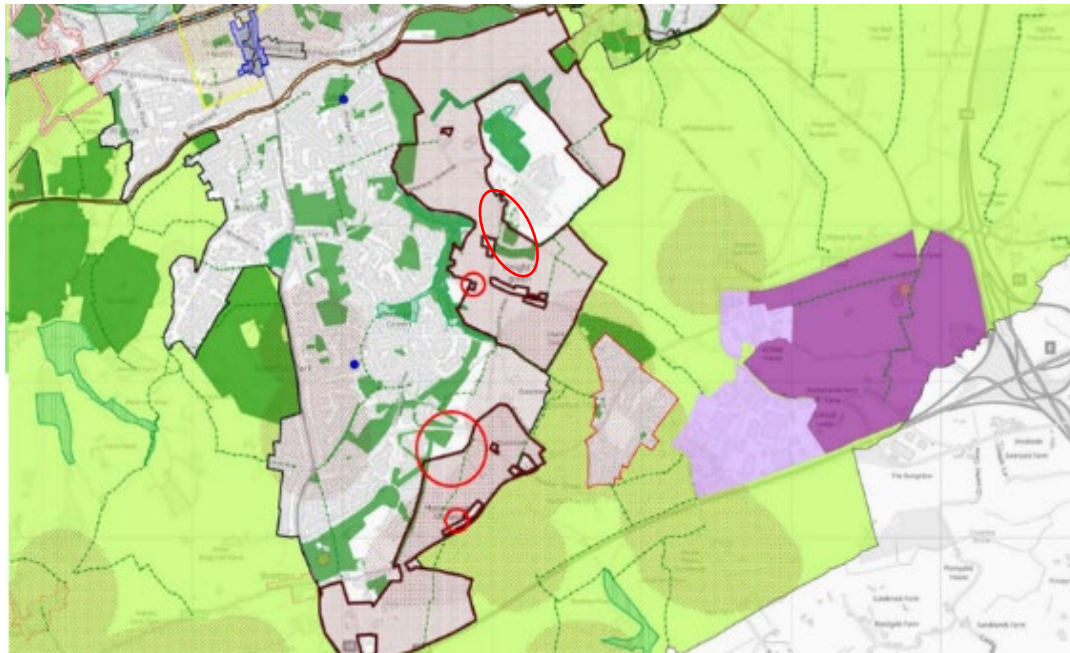


Proposed amendment to Policies Map:

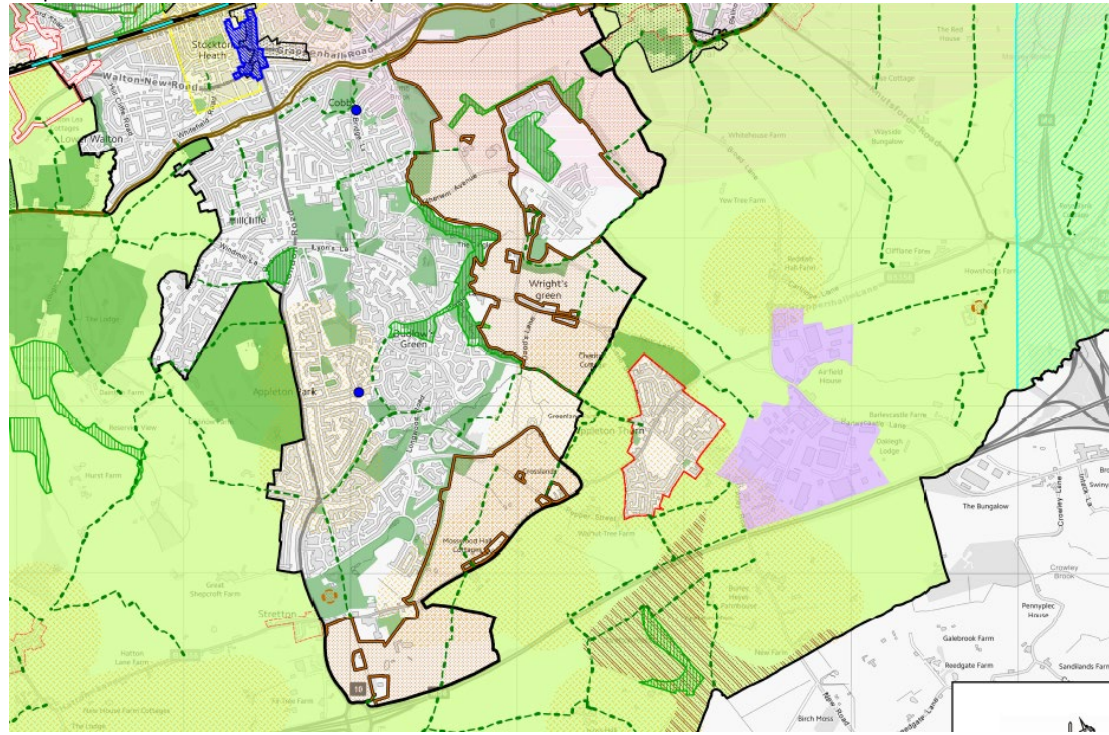


PMM 20	MD2	<p>Amend SEWUE site allocation boundary:</p> <ul style="list-style-type: none"> i) at Grappenhall Heys CPC to remove land outside of the ownership of Homes Land from the allocation site; ii) at Dingle Lane to remove two properties (Byways & Woodydene) from the allocation site; iii) south of Dipping Brook Road/west of Walnut Tree Lane/east of Woodbridge Close to include Homes England/Land Trust land within the site allocation boundary; iv) at Stretton Road (B5356) to include property in Homes England ownership adjacent to Mosswood Hall Cottages within the allocation site boundary; and v) Snap SEWUE site allocation boundary to logical features on base map in various locations. 	<p>To correct drafting errors in the submission version of the Polices Map (Document SP2) to site allocation boundary to correctly reflect Homes England/Land Trust land ownership.</p> <p>To correct drafting errors in the submission version of the Polices Map (Document SP2) that are only apparent on the interactive version of the map when viewed at a large scale.</p>
PMM 21	MD2	<p>Snap green belt boundary to logical features on base map to match any amendments to SEWUE allocation boundary in various locations.</p>	<p>Consequential change as a result of correcting drafting errors to the SEWUE site allocation boundary in the submission version of the Polices Map (Document SP2) that are only apparent on the interactive version of the map when viewed at a large scale.</p>

UPSVLP Policies Map:

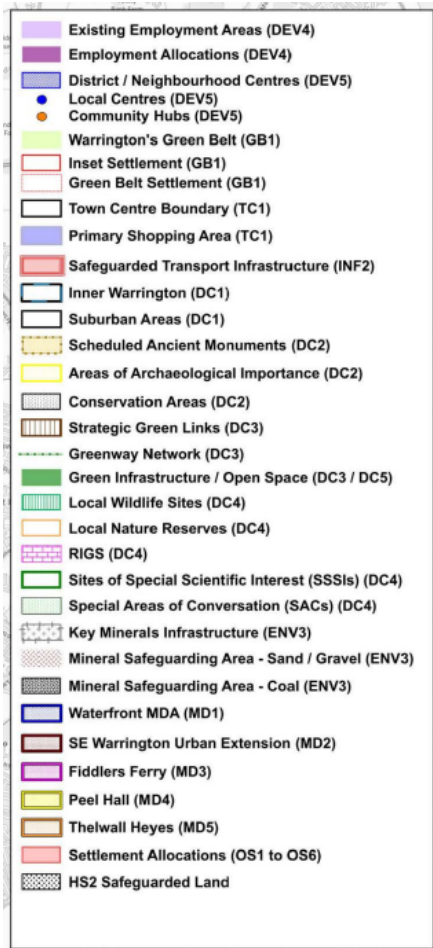


Proposed amendment to Policies Map:



Key/Legend			
PMM 22	Legend box	Add title "Legend".	
PMM 23	Legend box	Add the Great Manchester Wetlands Nature Improvement Area designation under the Historic, Cultural, Built and Natural Asset Designations section.	Consequential change to take account of the inclusion of the designation.
PMM 24	Legend box	Relabel the Green Infrastructure/Open Space (DC3/DC5) designation as "Open Space, Outdoor Sport and Recreation Provision (DC5)"	To reflect submissions made by, and discussion with, Cheshire Wildlife Trust (UPSVLP 0421).
PMM 25	Legend box	<p>Re-order legend to clearly identify sub-groups of policies such as those relating to residential and employment allocations etc. Suggested brake down of policy groupings:</p> <p>Employment and Retail Designations: DEV and TC policies.</p> <p>Warrington's Green Belt Designations: Green Belt, Inset Settlements and Green Belt Settlements (Policy GB1).</p> <p>Transport/Infrastructure Designations: INF Policies and HS2.</p> <p>Historic, Cultural, Built and Natural Asset Designations: DC Policies. Green Infrastructure (DC3), Ecological Network (DC4), Open Space (DC5).</p> <p>Environment Designations: ENV Policies.</p> <p>Residential designations - Main Development Areas, Settlement Allocations and committed sites: MD and OS Policies.</p>	To reflect submissions made by, and discussion with, Cheshire Wildlife Trust (UPSVLP 0421).
PMM 26	Legend box	Add the Great Manchester Wetlands Nature Improvement Area designation under the Historic, Cultural, Built and Natural Asset Designations section.	Consequential change to take account of the inclusion of the designation.
PMM 27	Legend box	Add the Existing Minerals Infrastructure designation under the Environment Designations section.	Consequential change to take account of the inclusion of the designation.
PMM 28	Legend box	Amend the title of the Key Minerals Infrastructure (ENV3) designation and show the sandstone quarry and clay pit MSA designations in two different colours and retitle as sandstone quarry and clay pit MSAs.	Consequential changes to make clear and more accurately reflect the policy designations.

UPSVL Policies Map:



Proposed amendment to Policies Map:

