

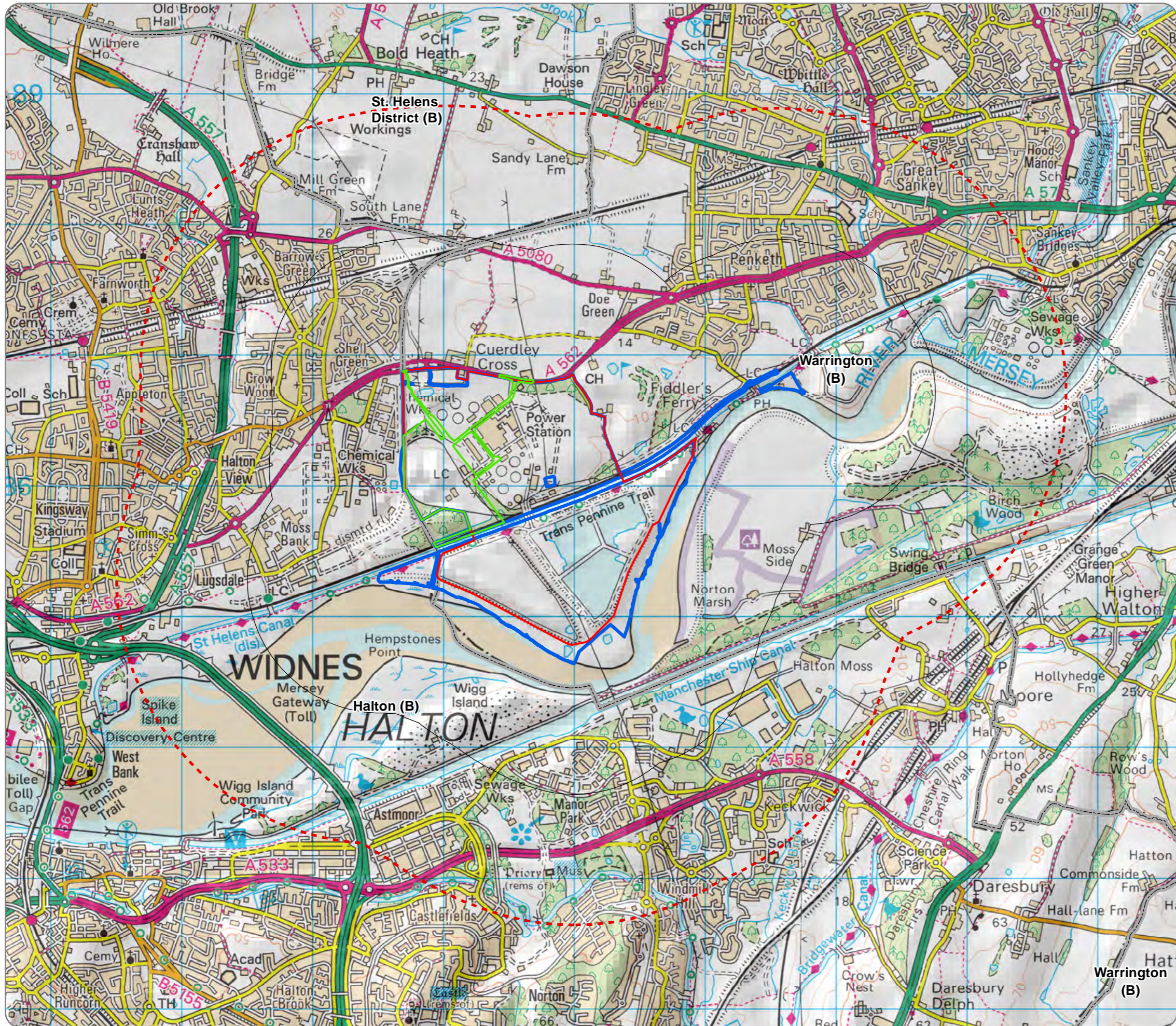
Former Fiddlers Ferry Power Station

Landscape and Visual Appraisal

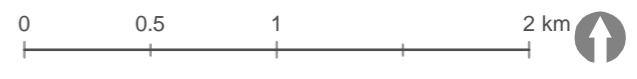
Appendix 2: Figures

May 2023

DRAFT



- Legend**
- Phase 1 Boundary
 - Ownership Boundary
 - - - Draft Allocation Boundary - Draft Policy MD3
 - 1km Radius
 - - - 2km Study Area
 - Local Authority

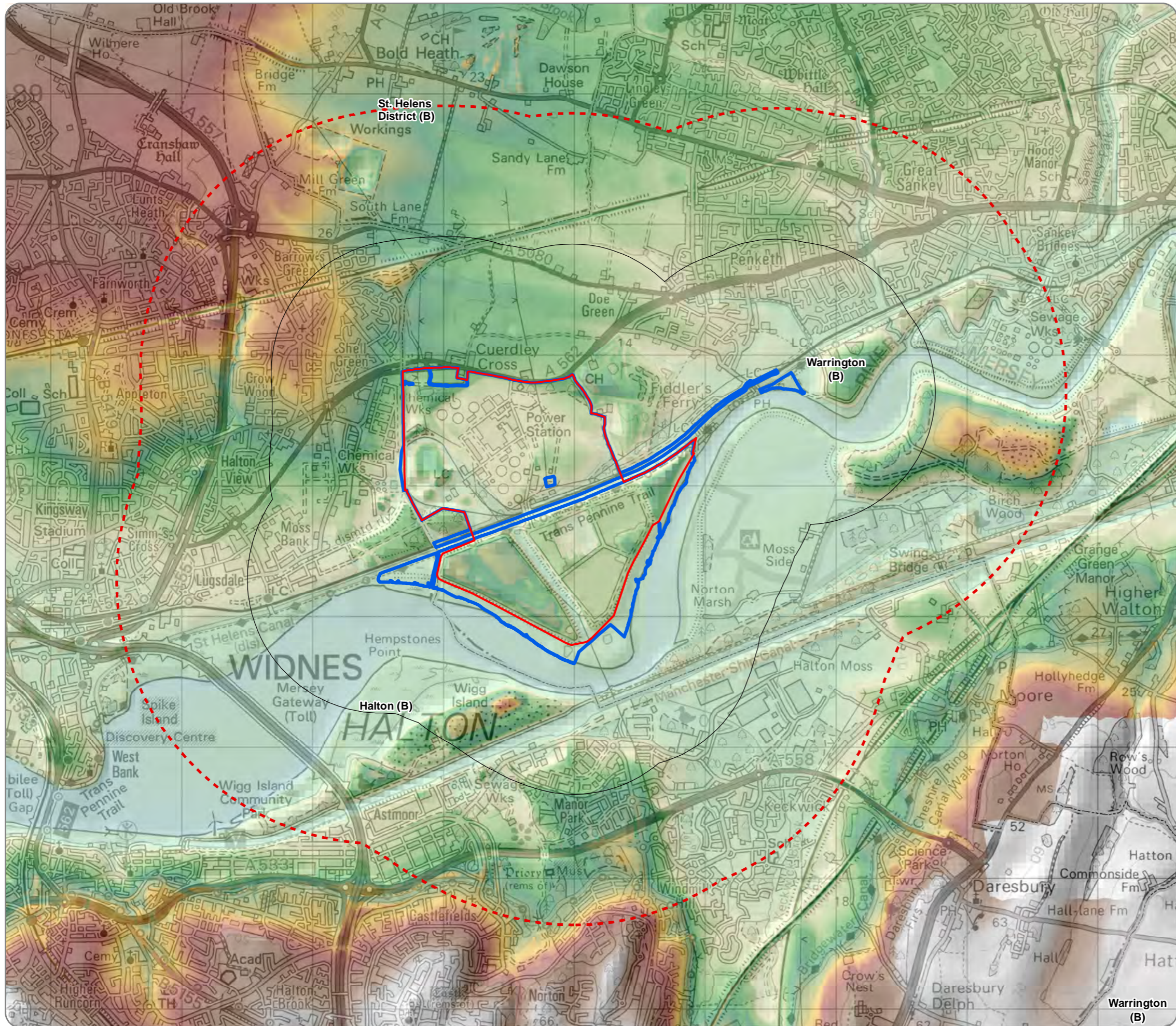


FIDLERS FERRY LVA

Figure 1 - Site Location and Study Area

Ref No: M20423	Created By: NL	Rev No: 1
Scale: 1:30,000	Drawing Size: A3	Date: 10/05/2023
Coordinate System: BNG OS GB 1936 Datum		





Legend

- Ownership Boundary
- Draft Allocation Boundary - Draft Policy
- 1km Radius
- 2km Study Area
- Local Authority

Environment Agency LIDAR 1m DTM (2020)

Elevation (m)

High : 102.488

Low : -6.1

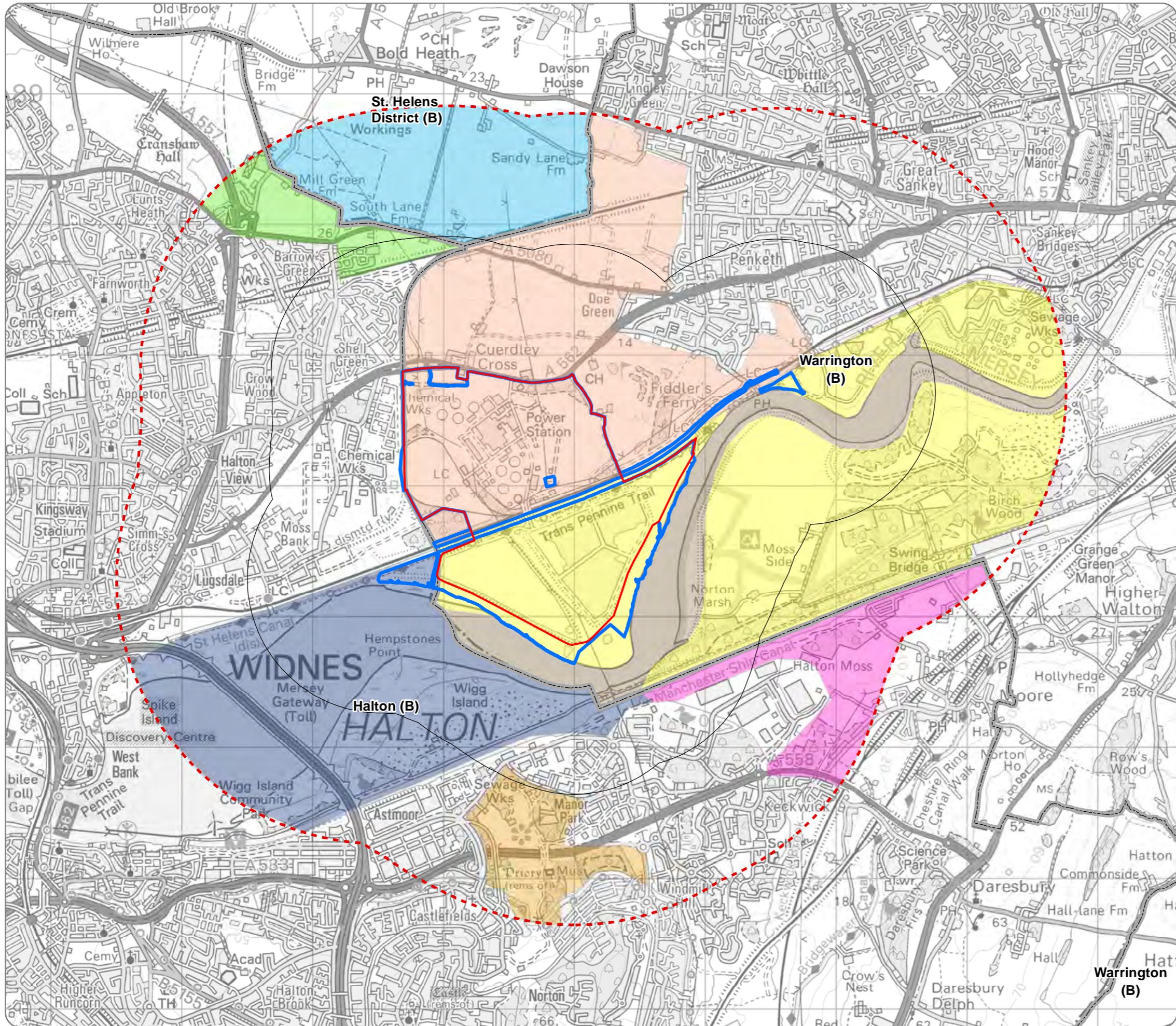


FIDLERS FERRY LVA

Figure 2 - Landform

Ref No: M20423	Created By: NL	Rev No: 1
Scale: 1:30,000	Drawing Size: A3	Date: 10/05/2023
Coordinate System: BNG OS GB 1936 Datum		





- Legend**
- Ownership Boundary
 - Draft Allocation Boundary - Draft Policy MD3
 - 1km Radius
 - 2km Study Area
 - Local Authority
- Warrington Landscape Character Assessment (2007)**
- Penketh & Cuerdley (1F)
 - River Mersey/Bollin (5A)
 - Victoria Park to Fiddler's Ferry (6A)
- St Helens Landscape Character Assessment (2006)**
- Floodplain Farmland (FF)
- Halton Landscape Character Assessment (2009)**
- Moore Village and Keckwick Brook Valley
 - North Widnes Farmland
 - Norton Wooded Parkland
 - Upper Mersey

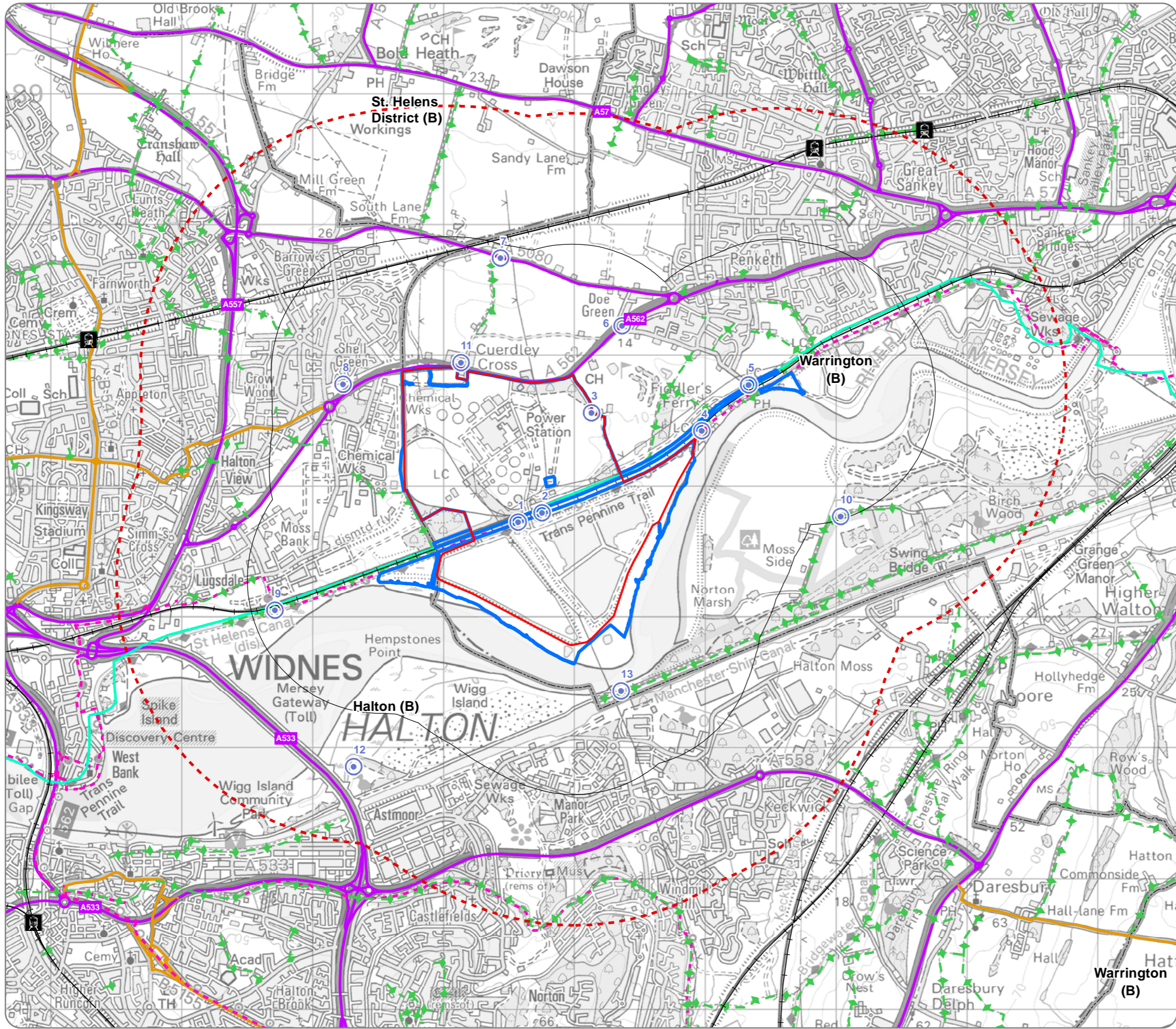


FIDLERS FERRY LVA

Figure 3 - Landscape Character

Ref No: M20423	Created By: NL	Rev No: 1
Scale: 1:30,000	Drawing Size: A3	Date: 10/05/2023
Coordinate System: BNG OS GB 1936 Datum		





Legend

- Ownership Boundary
- Draft Allocation Boundary - Draft Policy MD3
- 1km Radius
- 2km Study Area
- Local Authority
- Viewpoints
 1. Trans Pennine Trail to South of Site, West
 2. Trans Pennine Trail to South of Site, East
 3. Trans Pennine Trail / Station Road Bridge at Fiddler's Ferry Marina
 4. Trans Pennine Trail / Station Road Over Bridge at Fiddlers Ferry Marina
 5. Station Road
 6. A562 Widnes Road Junction
 7. Garden Centre, South Lane
 8. Weates Close
 9. Trans Pennine Trail / Charter House Bridge
 10. Moore Nature Reserve
 11. Cuerdley Green
 12. Wigg Island Nature Reserve
 13. PRoW West of Moore Nature Reserve
- Railway Station
- Railway
- Long Distance Walking Routes
- Public Right of Way
- National Cycle Route
- Motorway
- Primary and A Road
- B Road

0 0.5 1 2 km

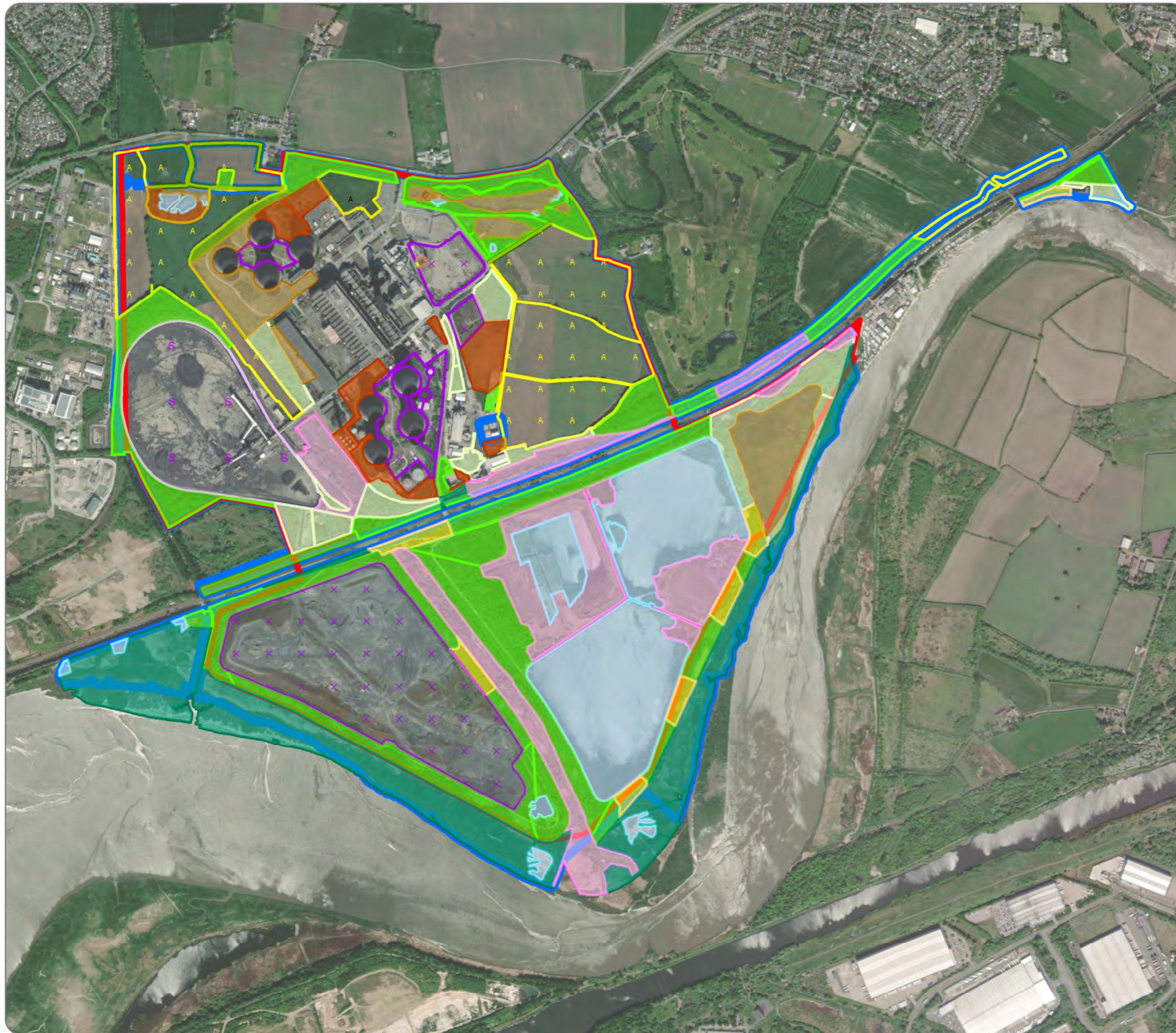
FIDDLERS FERRY LVA

Figure 4 - Viewpoint Locations

Ref No: M20423	Created By: NL	Rev No: 1
Scale: 1:30,000	Drawing Size: A3	Date: 10/05/2023
Coordinate System: BNG OS GB 1936 Datum		



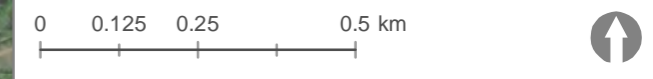
SOURCE: Contains OS data © Crown copyright and database right (2023) Ordnance Survey 0100031673. Contains public sector information licensed under the Open Government Licence v3.0, OpenStreetMap (and) contributors, CC-BY-SA OpenStreetMap data: National Cycle Route data supplied by Sustrans contains Ordnance Survey data (© Crown copyright and database rights (2023)).



- Legend**
- ▭ Ownership Boundary
 - ▭ Draft Allocation Boundary - Draft Policy MD3
 - ▭ Amenity Grassland
 - ▭ Arable
 - ▭ Broadleaved Plantation Woodland
 - ▭ Mixed / Scattered Scrub
 - ▭ Ephemeral / Short Perennial
 - ▭ Mixed Plantation Woodland
 - ▭ Salt Marsh
 - ▭ Semi Improved Neutral Grassland
 - ▭ Species Poor Intact Hedge
 - ▭ Spoil
 - ▭ Standing Water
 - ▭ Tall Ruderal
 - ▭ Unimproved Neutral Grassland
 - ▭ Wet Grassland

Sources:
 Arcadis Ecology Mapping (2022)
 Arcadis (2022) Extended UK Habitat Classification Map

*This figure is not intended to represent definitive ecology or habitat data, but rather shows key landscape features across the site.

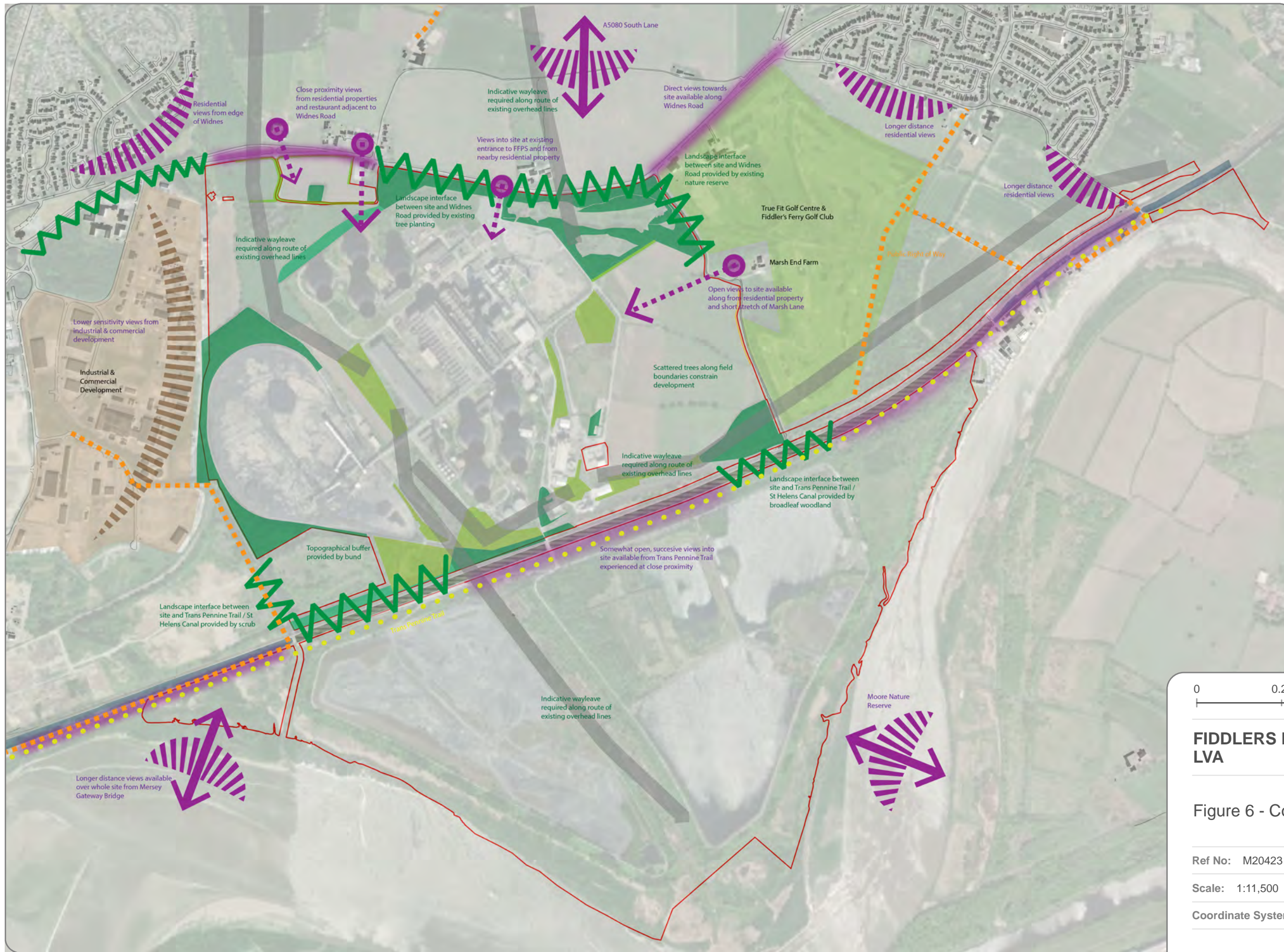


**FIDDLERS FERRY
LVA**

Figure 5 - Existing baseline:
landscape elements and features

Ref No: M20423	Created By: NL	Rev No: 2
Scale: 1:12,000	Drawing Size: A3	Date: 16/05/2023
Coordinate System: BNG OS GB 1936 Datum		





- Legend**
- Ownership Boundary
 - Successive Views Towards Site
 - Key Visual Receptor
 - Longer Distance Views
 - Topographical Interface
 - Vegetation Interface
 - Trans Pennine Trail
 - Public Right of Way
 - Landscape constraints / opportunities**
 - Visual constraints / opportunities**
 - Broadleaved Plantation Woodland
 - Mixed Plantation Woodland
 - Mixed / Scattered Scrub
 - Species Poor Intact Hedge
 - Species Poor Hedge and Trees

0 0.25 0.5 km 0.75

**FIDDLERS FERRY
LVA**

Figure 6 - Constraints and Opportunities

Ref No: M20423	Created By: GK	Rev No: 2
Scale: 1:11,500	Drawing Size: A3	Date: 16/05/2023
Coordinate System: BNG OS GB 1936 Datum		

open
optimised environments
PART OF **SLR**



Brackets illustrate approximate horizontal extent of FF Development Area in view.

OS reference: 354571 E 385726 N

Horizontal field of view: 90° (cylindrical projection)

Camera: Canon EOS 6D
 Lens: EF50mm f/1.4 USM
 Camera height: 1.5 m AGL
 Date and time: 02/03/2023, 13:45

Figure: 7
Viewpoint 1: Trans Pennine Trail to South of Site, West



Brackets illustrate approximate horizontal extent of FF Development Area in view.

OS reference: 354754 E 385798 N

Horizontal field of view: 90° (cylindrical projection)

Camera: Canon EOS 6D
 Lens: EF50mm f/1.4 USM
 Camera height: 1.5 m AGL
 Date and time: 02/03/2023, 13:52

Figure: 8
Viewpoint 2: Trans Pennine Trail to South of Site, East



Brackets illustrate approximate horizontal extent of FF Development Area in view.

OS reference: 355131 E 386562 N

Horizontal field of view: 90° (cylindrical projection)

Camera: Canon EOS 6D
Lens: EF50mm f/1.4 USM
Camera height: 1.5 m AGL
Date and time: 02/03/2023, 11:13

Figure: 9
Viewpoint 3: Marsh Lane



Brackets illustrate approximate horizontal extent of FF Development Area in view.

OS reference: 355972 E 386425 N

Horizontal field of view: 90° (cylindrical projection)

Camera: Canon EOS 6D
Lens: EF50mm f/1.4 USM
Camera height: 1.5 m AGL
Date and time: 02/03/2023, 12:47

Figure: 10
Viewpoint 4: Trans Pennine Trail / Station Road
Bridge at Fiddler's Ferry Marina



Brackets illustrate approximate horizontal extent of FF Development Area in view.

OS reference: 356331 E 386775 N

Horizontal field of view: 90° (cylindrical projection)

Camera: Canon EOS 6D
Lens: EF50mm f/1.4 USM
Camera height: 1.5 m AGL
Date and time: 02/03/2023, 14:33

Figure: 11
Viewpoint 5: Station Road



Brackets illustrate approximate horizontal extent of FF Development Area in view.

OS reference: 355365 E 387227 N

Horizontal field of view: 90° (cylindrical projection)

Camera: Canon EOS 6D
Lens: EF50mm f/1.4 USM
Camera height: 1.5 m AGL
Date and time: 02/03/2023, 11:39

Figure: 12
Viewpoint 6: A562 Widnes Road Junction



OS reference: 354435 E 387747 N

Horizontal field of view: 90° (cylindrical projection)

Camera: Canon EOS 6D
Lens: EF50mm f/1.4 USM
Camera height: 1.5 m AGL
Date and time: 02/03/2023, 12:05

Figure: 13
Viewpoint 7: Garden Centre, South Lane



Brackets illustrate approximate horizontal extent of FF Development Area in view.

OS reference: 353231 E 386782 N

Horizontal field of view: 90° (cylindrical projection)

Camera: Canon EOS 6D
Lens: EF50mm f/1.4 USM
Camera height: 1.5 m AGL
Date and time: 02/03/2023, 10:28

Figure: 14
Viewpoint 8: Weates Close



Brackets illustrate approximate horizontal extent of FF Development Area in view.

OS reference: 352711 E 385053 N

Horizontal field of view: 90° (cylindrical projection)

Camera: Canon EOS 6D
Lens: EF50mm f/1.4 USM
Camera height: 1.5 m AGL
Date and time: 02/03/2023, 15:12

Figure: 15
Viewpoint 9: Trans Pennine Trail / Charter House Bridge



Brackets illustrate approximate horizontal extent of FF Development Area in view.

OS reference: 357033 E 385769 N

Horizontal field of view: 90° (cylindrical projection)

Camera: Canon EOS 6D
Lens: EF50mm f/1.4 USM
Camera height: 1.5 m AGL
Date and time: 02/03/2023, 16:02

Figure: 16
Viewpoint 10: Moore Nature Reserve



Brackets illustrate approximate horizontal extent of FF Development Area in view.

OS reference: 354132 E 386946 N

Horizontal field of view: 90° (cylindrical projection)

Camera: Canon EOS M50
 Lens: EF-M18-150mm f/3.5-6.3 IS STM
 Camera height: 1.5 m AGL
 Date and time: 25/03/2022, 17:53

Figure: 17
 Viewpoint 11: Cuerdley Green, Widnes

Viewpoint photography provided by Arcadis.



Brackets illustrate approximate horizontal extent of FF Development Area in view.

OS reference: 353313 E 383858 N

Horizontal field of view: 90° (cylindrical projection)

Camera: Canon EOS M50
Lens: EF-M18-150mm f/3.5-6.3 IS STM
Camera height: 1.5 m AGL
Date and time: 25/03/2022, 16:02

Figure: 18
Viewpoint 12: Wigg Island Nature Reserve

Viewpoint photography provided by Arcadis.



Brackets illustrate approximate horizontal extent of FF Development Area in view.

OS reference: 356819 E 385420 N

Horizontal field of view: 90° (cylindrical projection)

Camera: Canon EOS 6D
Lens: EF50mm f/1.4 USM
Camera height: 1.5 m AGL
Date and time: 28/10/2022

Figure: 19
Viewpoint 13: PRow West of Moore Nature Reserve

Viewpoint photography provided by Arcadis.